



RNF4 rabbit pAb

Catalog No	YP-Ab-12216
Isotype	IgG
Reactivity	Human; Mouse; Rat
Applications	WB; ELISA; IHC
Gene Name	RNF4 SNURF RES4-26
Protein Name	RNF4
Immunogen	Synthesized peptide derived from human RNF4 AA range: 71-121
Specificity	This antibody detects endogenous levels of RNF4 at Human/Mouse/Rat
Formulation	Liquid in PBS containing 50% glycerol, 0.5% BSA and 0.02% sodium azide.
Source	Polyclonal, Rabbit, IgG
Purification	The antibody was affinity-purified from rabbit serum by affinity-chromatography using specific immunogen.
Dilution	WB 1:500-2000; IHC-p 1:50-300; ELISA 2000-20000
Concentration	1 mg/ml
Purity	≥90%
Storage Stability	-20°C/1 year
Synonyms	
Observed Band	
Cell Pathway	Cytoplasm. Nucleus. Nucleus, PML body. Nucleus, nucleoplasm.
Tissue Specificity	Widely expressed at low levels in many tissues; highly expressed in testis.
Function	function: Enhances steroid receptor-mediated transcriptional activation as well as activating basal transcription.; similarity: Contains 1 RING-type zinc finger.; subunit: Interacts with GSCL, Androgen receptor, TCF20, TBP and PATZ1.; tissue specificity: Widely expressed at low levels in many tissues; highly expressed in testis.;
Background	The protein encoded by this gene contains a RING finger motif and acts as a transcription regulator. This protein has been shown to interact with, and inhibit the activity of, TRPS1, a transcription suppressor of GATA-mediated transcription. Transcription repressor ZNF278/PATZ is found to interact with this protein, and thus reduce the enhancement of androgen receptor-dependent transcription mediated by this protein. Studies of the mouse and rat counterparts suggested a role of this protein in spermatogenesis. A pseudogene of this gene is found on chromosome 1.[provided by RefSeq, Jul 2010],

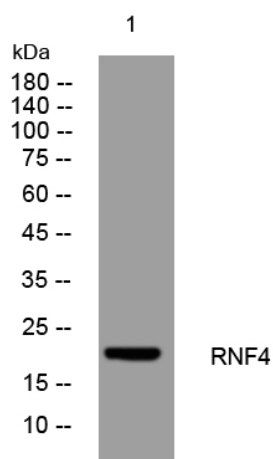
**matters needing attention**

Avoid repeated freezing and thawing!

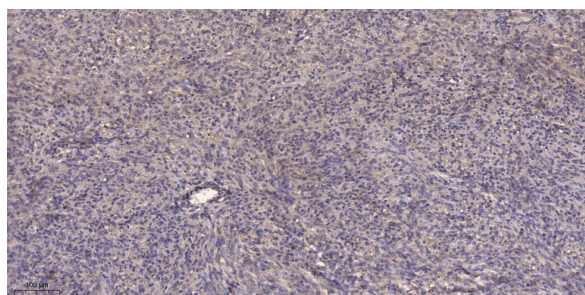
Usage suggestions

This product can be used in immunological reaction related experiments. For more information, please consult technical personnel.

Products Images



Western blot analysis of lysates from HCT116 cells, primary antibody was diluted at 1:1000, 4° over night



Immunohistochemical analysis of paraffin-embedded human Colon cancer. 1, Antibody was diluted at 1:200(4° overnight). 2, Tris-EDTA, pH9.0 was used for antigen retrieval. 3, Secondary antibody was diluted at 1:200(room temperature, 45min).