

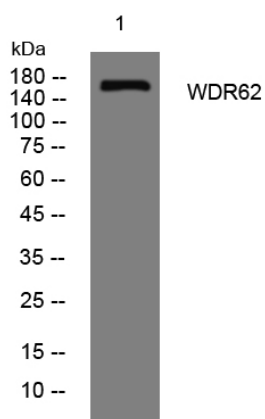


WDR62 rabbit pAb

Catalog No	YP-Ab-12213
Isotype	IgG
Reactivity	Human; Mouse
Applications	WB
Gene Name	WDR62 C19orf14
Protein Name	WDR62
Immunogen	Synthesized peptide derived from human WDR62 AA range: 984-1034
Specificity	This antibody detects endogenous levels of WDR62 at Human/Mouse
Formulation	Liquid in PBS containing 50% glycerol, 0.5% BSA and 0.02% sodium azide.
Source	Polyclonal, Rabbit,IgG
Purification	The antibody was affinity-purified from rabbit serum by affinity-chromatography using specific immunogen.
Dilution	WB 1: 500-2000
Concentration	1 mg/ml
Purity	≥90%
Storage Stability	-20°C/1 year
Synonyms	
Observed Band	
Cell Pathway	Nucleus . Cytoplasm, cytoskeleton, spindle pole . Cytoplasm, cytoskeleton, microtubule organizing center, centrosome . Cytoplasm, cytoskeleton, microtubule organizing center, centrosome, centriole . Shows cell cycle-dependent localization. Accumulates to the spindle pole during mitosis. Colocalizes with CDK5RAP2, CEP152 and WDR62 in a discrete ring around the proximal end of the parental centriole. At this site, a cohesive structure is predicted to engage parental centrioles and procentrioles. .
Tissue Specificity	Present in fetal brain, enriched within the ventricular and subventricular zone (at protein level). In the embryonic brain it is expressed in mitotic neural precursor cells.
Function	similarity:Contains 15 WD repeats.,
Background	This gene is proposed to play a role in cerebral cortical development. Mutations in this gene have been associated with microencephaly, cortical malformations, and mental retardation. Alternative splicing results in multiple transcript variants. [provided by RefSeq, Jan 2011],
matters needing attention	Avoid repeated freezing and thawing!

Usage suggestions

This product can be used in immunological reaction related experiments. For more information, please consult technical personnel.

Products Images

Western blot analysis of lysates from MCF-7 cells, primary antibody was diluted at 1:1000, 4° over night