



NAL12 rabbit pAb

Catalog No	YP-Ab-12202
Isotype	IgG
Reactivity	Human; Mouse
Applications	WB;ELISA;IHC
Gene Name	NLRP12 NALP12 PYPAF7 RNO
Protein Name	NAL12
Immunogen	Synthesized peptide derived from human NAL12 AA range: 456-506
Specificity	This antibody detects endogenous levels of NAL12 at Human/Mouse
Formulation	Liquid in PBS containing 50% glycerol, 0.5% BSA and 0.02% sodium azide.
Source	Polyclonal, Rabbit,IgG
Purification	The antibody was affinity-purified from rabbit serum by affinity-chromatography using specific immunogen.
Dilution	WB 1:500-2000;IHC-p 1:50-300; ELISA 2000-20000
Concentration	1 mg/ml
Purity	≥90%
Storage Stability	-20°C/1 year
Synonyms	
Observed Band	
Cell Pathway	Cytoplasm .
Tissue Specificity	Detected only in peripheral blood leukocytes, predominantly in eosinophils and granulocytes, and at lower levels in monocytes.
Function	disease:Defects in NLRP12 are the cause of familial cold autoinflammatory syndrome type 2 (FCAS2) [MIM:611762]. FCAS are rare autosomal dominant systemic inflammatory diseases characterized by episodes of rash, arthralgia, fever and conjunctivitis after generalized exposure to cold.,function:May mediate activation of CASP1 via ASC and promote activation of NF-kappa-B via IKK.,induction:By nitric oxide and DMSO in HL60 cells, an acute myeloid leukemia cell line.,similarity:Belongs to the NLRP family.,similarity:Contains 1 DAPIN domain.,similarity:Contains 1 NACHT domain.,similarity:Contains 8 LRR (leucine-rich) repeats.,subunit:Binds to ASC with its DAPIN domain.,tissue specificity:Detected only in peripheral blood leukocytes, predominantly in eosinophils and granulocytes, and at lower levels in monocytes.,
Background	This gene encodes a member of the CATERPILLER family of cytoplasmic proteins. The encoded protein, which contains an N-terminal pyrin domain, a NACHT domain, a NACHT-associated domain, and a C-terminus leucine-rich repeat region, functions as an attenuating factor of inflammation by suppressing



inflammatory responses in activated monocytes. Mutations in this gene cause familial cold autoinflammatory syndrome type 2. Alternative splicing results in multiple transcript variants. [provided by RefSeq, Mar 2013],

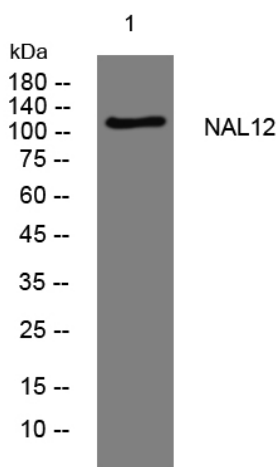
matters needing attention

Avoid repeated freezing and thawing!

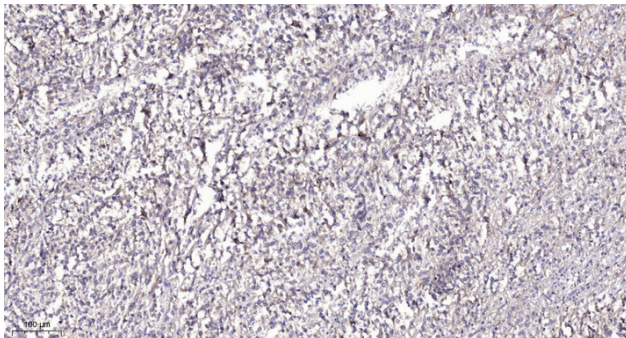
Usage suggestions

This product can be used in immunological reaction related experiments. For more information, please consult technical personnel.

Products Images



Western blot analysis of lysates from VEC cells, primary antibody was diluted at 1:1000, 4° over night



Immunohistochemical analysis of paraffin-embedded human Colon cancer. 1, Antibody was diluted at 1:200(4° overnight). 2, Tris-EDTA,pH9.0 was used for antigen retrieval. 3,Secondary antibody was diluted at 1:200(room temperature, 45min).