

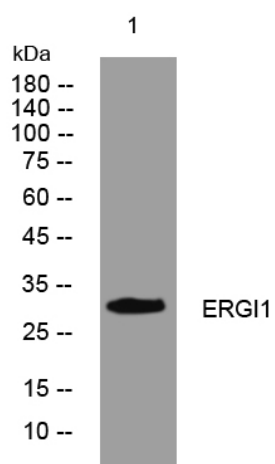


# ERGI1 rabbit pAb

<b>Catalog No</b>	YP-Ab-12195
<b>Isotype</b>	IgG
<b>Reactivity</b>	Human; Mouse
<b>Applications</b>	WB
<b>Gene Name</b>	ERGIC1 ERGIC32 KIAA1181 HT034
<b>Protein Name</b>	ERGI1
<b>Immunogen</b>	Synthesized peptide derived from human ERGI1 AA range: 136-186
<b>Specificity</b>	This antibody detects endogenous levels of ERGI1 at Human/Mouse
<b>Formulation</b>	Liquid in PBS containing 50% glycerol, 0.5% BSA and 0.02% sodium azide.
<b>Source</b>	Polyclonal, Rabbit,IgG
<b>Purification</b>	The antibody was affinity-purified from rabbit serum by affinity-chromatography using specific immunogen.
<b>Dilution</b>	WB 1: 500-2000
<b>Concentration</b>	1 mg/ml
<b>Purity</b>	≥90%
<b>Storage Stability</b>	-20°C/1 year
<b>Synonyms</b>	
<b>Observed Band</b>	
<b>Cell Pathway</b>	Endoplasmic reticulum membrane ; Multi-pass membrane protein . Endoplasmic reticulum-Golgi intermediate compartment membrane ; Multi-pass membrane protein . Golgi apparatus membrane ; Multi-pass membrane protein . Cycles between the endoplasmic reticulum and the Golgi.
<b>Tissue Specificity</b>	
<b>Function</b>	function:Possible role in transport between endoplasmic reticulum and Golgi.,PTM:N-glycosylated.,similarity:Belongs to the ERGIC family.,subcellular location:Cycles between the endoplasmic reticulum and the Golgi.,subunit:Interacts with ERGIC3/ERV46.,
<b>Background</b>	This gene encodes a cycling membrane protein which is an endoplasmic reticulum-golgi intermediate compartment (ERGIC) protein which interacts with other members of this protein family to increase their turnover. [provided by RefSeq, Jul 2008],
<b>matters needing attention</b>	Avoid repeated freezing and thawing!

**Usage suggestions**

This product can be used in immunological reaction related experiments. For more information, please consult technical personnel.

**Products Images**

Western blot analysis of lysates from CACO2 cells, primary antibody was diluted at 1:1000, 4° over night