



# FANCB rabbit pAb

<b>Catalog No</b>	YP-Ab-12189
<b>Isotype</b>	IgG
<b>Reactivity</b>	Human; Mouse
<b>Applications</b>	WB
<b>Gene Name</b>	FANCB
<b>Protein Name</b>	FANCB
<b>Immunogen</b>	Synthesized peptide derived from human FANCB AA range: 585-635
<b>Specificity</b>	This antibody detects endogenous levels of FANCB at Human/Mouse
<b>Formulation</b>	Liquid in PBS containing 50% glycerol, 0.5% BSA and 0.02% sodium azide.
<b>Source</b>	Polyclonal, Rabbit,IgG
<b>Purification</b>	The antibody was affinity-purified from rabbit serum by affinity-chromatography using specific immunogen.
<b>Dilution</b>	WB 1: 500-2000
<b>Concentration</b>	1 mg/ml
<b>Purity</b>	≥90%
<b>Storage Stability</b>	-20°C/1 year
<b>Synonyms</b>	
<b>Observed Band</b>	
<b>Cell Pathway</b>	Nucleus .
<b>Tissue Specificity</b>	
<b>Function</b>	disease:Defects in FANCB are a cause of Fanconi anemia (FA) [MIM:227650]. FA is a genetically heterogeneous, autosomal recessive disorder characterized by progressive pancytopenia, a diverse assortment of congenital malformations, and a predisposition to the development of malignancies. At the cellular level it is associated with hypersensitivity to DNA-damaging agents, chromosomal instability (increased chromosome breakage), and defective DNA repair.,disease:Defects in FANCB are the cause of cause of Fanconi anemia complementation group B (FANCB) [MIM:300514]; also called Fanconi pancytopenia type 2 (FA2).,disease:Defects in FANCB are the cause of X-linked VACTERL-H (XVACTERL-H) [MIM:314390]; also known as X-linked VACTERL association with hydrocephalus syndrome. VACTERL is an acronym for vertebral anomalies, anal atresia, cardiac malformations, tracheoesophageal fistula, renal anomalies
<b>Background</b>	This gene encodes a member of the Fanconi anemia complementation group B. This protein is assembled into a nucleoprotein complex that is involved in the



repair of DNA lesions. Mutations in this gene can cause chromosome instability and VACTERL syndrome with hydrocephalus. [provided by RefSeq, Apr 2016],

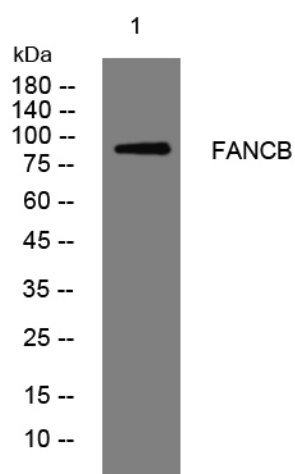
#### matters needing attention

Avoid repeated freezing and thawing!

#### Usage suggestions

This product can be used in immunological reaction related experiments. For more information, please consult technical personnel.

### Products Images



Western blot analysis of lysates from MDA-MB cells, primary antibody was diluted at 1:1000, 4° over night