

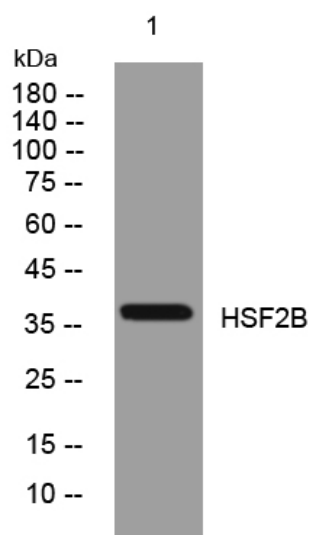


HSF2B rabbit pAb

Catalog No	YP-Ab-12186
Isotype	IgG
Reactivity	Human;Rat;Mouse;
Applications	WB
Gene Name	HSF2BP
Protein Name	HSF2B
Immunogen	Synthesized peptide derived from human HSF2B AA range: 201-251
Specificity	This antibody detects endogenous levels of HSF2B at Human
Formulation	Liquid in PBS containing 50% glycerol, 0.5% BSA and 0.02% sodium azide.
Source	Polyclonal, Rabbit,IgG
Purification	The antibody was affinity-purified from rabbit serum by affinity-chromatography using specific immunogen.
Dilution	WB 1: 500-2000
Concentration	1 mg/ml
Purity	≥90%
Storage Stability	-20°C/1 year
Synonyms	
Observed Band	
Cell Pathway	Cytoplasm . Chromosome . Localizes on double-strand breaks (DSBs) in mitotic and meiotic chromosomes. .
Tissue Specificity	Testis specific. Overexpressed in some tumors (PubMed:31242413).
Function	function:May be involved in modulating HSF2 activation in testis.,PTM:Sumoylated by UBE2I in response to MEKK1-mediated stimuli.,subunit:Associates with HSF2. The interaction seems to occur between the trimerization domain of HSF2 and the N-terminal hydrophilic region of HSF2BP.,tissue specificity:Testis specific.,
Background	HSF2 binding protein (HSF2BP) associates with HSF2. The interaction occurs between the trimerization domain of HSF2 and the amino terminal hydrophilic region of HSF2BP that comprises two leucine zipper motifs. HSF2BP may therefore be involved in modulating HSF2 activation. [provided by RefSeq, Jul 2008],
matters needing attention	Avoid repeated freezing and thawing!

Usage suggestions

This product can be used in immunological reaction related experiments. For more information, please consult technical personnel.

Products Images

Western blot analysis of lysates from 293T cells,
primary antibody was diluted at 1:1000, 4° over night