



# FACR2 rabbit pAb

<b>Catalog No</b>	YP-Ab-12176
<b>Isotype</b>	IgG
<b>Reactivity</b>	Human; Mouse
<b>Applications</b>	WB
<b>Gene Name</b>	FAR2 MLSTD1
<b>Protein Name</b>	FACR2
<b>Immunogen</b>	Synthesized peptide derived from human FACR2 AA range: 409-459
<b>Specificity</b>	This antibody detects endogenous levels of FACR2 at Human/Mouse
<b>Formulation</b>	Liquid in PBS containing 50% glycerol, 0.5% BSA and 0.02% sodium azide.
<b>Source</b>	Polyclonal, Rabbit,IgG
<b>Purification</b>	The antibody was affinity-purified from rabbit serum by affinity-chromatography using specific immunogen.
<b>Dilution</b>	WB 1: 500-2000
<b>Concentration</b>	1 mg/ml
<b>Purity</b>	≥90%
<b>Storage Stability</b>	-20°C/1 year
<b>Synonyms</b>	
<b>Observed Band</b>	
<b>Cell Pathway</b>	Peroxisome membrane ; Single-pass membrane protein .
<b>Tissue Specificity</b>	
<b>Function</b>	catalytic activity:Fatty acyl-CoA + 2 NADPH = fatty alcohol + 2 NADP(+).,function:Catalyzes the reduction of fatty acyl-CoA to fatty alcohols. The preferred substrates are C16, C18, C18:1 and C18:2 but low activity can be observed with C10-C14 substrates.,similarity:Belongs to the fatty acyl-CoA reductase family.,subcellular location:Peroxisome in cells expressing low levels of the protein. Peroxisome and endoplasmic reticulum in cells expressing high levels of the protein.,
<b>Background</b>	This gene belongs to the short chain dehydrogenase/reductase superfamily. It encodes a reductase enzyme involved in the first step of wax biosynthesis wherein fatty acids are converted to fatty alcohols. The encoded peroxisomal protein utilizes saturated fatty acids of 16 or 18 carbons as preferred substrates. Alternatively spliced transcript variants have been observed for this gene. Related pseudogenes have been identified on chromosomes 2, 14 and 22. [provided by RefSeq, Nov 2012],

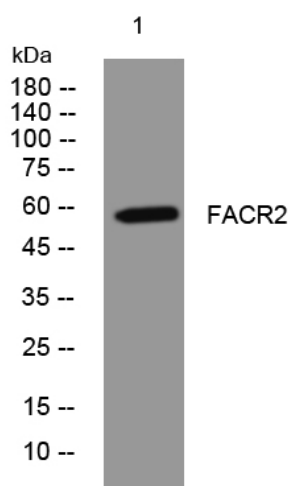
**matters needing attention**

Avoid repeated freezing and thawing!

**Usage suggestions**

This product can be used in immunological reaction related experiments. For more information, please consult technical personnel.

## Products Images



Western blot analysis of lysates from MCF-7 cells, primary antibody was diluted at 1:1000, 4° over night