

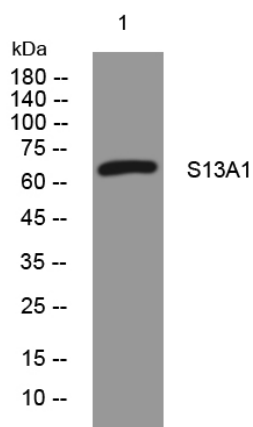


# S13A1 rabbit pAb

<b>Catalog No</b>	YP-Ab-12158
<b>Isotype</b>	IgG
<b>Reactivity</b>	Human; Mouse; Rat
<b>Applications</b>	WB
<b>Gene Name</b>	SLC13A1 NAS1 NAS1
<b>Protein Name</b>	S13A1
<b>Immunogen</b>	Synthesized peptide derived from human S13A1 AA range: 490-540
<b>Specificity</b>	This antibody detects endogenous levels of S13A1 at Human/Mouse/Rat
<b>Formulation</b>	Liquid in PBS containing 50% glycerol, 0.5% BSA and 0.02% sodium azide.
<b>Source</b>	Polyclonal, Rabbit, IgG
<b>Purification</b>	The antibody was affinity-purified from rabbit serum by affinity-chromatography using specific immunogen.
<b>Dilution</b>	WB 1: 500-2000
<b>Concentration</b>	1 mg/ml
<b>Purity</b>	≥90%
<b>Storage Stability</b>	-20°C/1 year
<b>Synonyms</b>	
<b>Observed Band</b>	
<b>Cell Pathway</b>	Membrane; Multi-pass membrane protein.
<b>Tissue Specificity</b>	Highly expressed in kidney; not detectable in the other tissues tested.
<b>Function</b>	function: Sodium/sulfate cotransporter that mediates sulfate reabsorption in the kidney., induction: Inhibited by thiosulfate, selenate, molybdate, tungstate, citrate and succinate., similarity: Belongs to the SLC13A transporter (TC 2.A.47) family. NADC subfamily., tissue specificity: Highly expressed in kidney; not detectable in the other tissues tested.,
<b>Background</b>	The protein encoded by this gene is an apical membrane Na(+)-sulfate cotransporter involved in sulfate homeostasis in the kidney. Defects in this gene lead to many pathophysiologic problems. [provided by RefSeq, May 2016],
<b>matters needing attention</b>	Avoid repeated freezing and thawing!
<b>Usage suggestions</b>	This product can be used in immunological reaction related experiments. For more information, please consult technical personnel.



## Products Images



Western blot analysis of lysates from A431 cells,  
primary antibody was diluted at 1:1000, 4° over night