

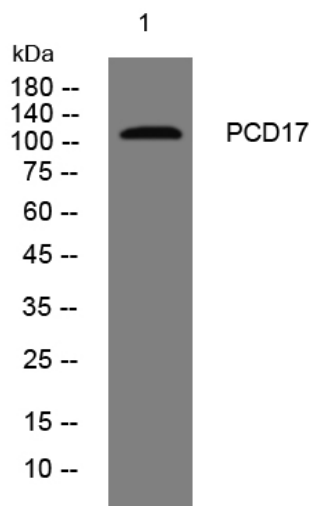


# PCD17 rabbit pAb

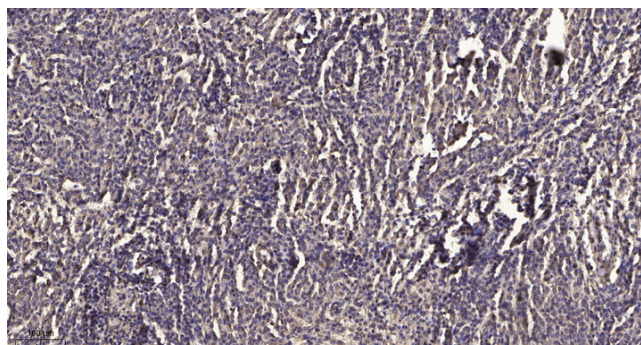
|                                  |   |
|----------------------------------|---|
| <b>Catalog No</b>                | YP-Ab-12149   |
| <b>Isotype</b>                   | IgG   |
| <b>Reactivity</b>                | Human;Rat;Mouse;  |
| <b>Applications</b>              | WB;IHC  |
| <b>Gene Name</b>                 | PCDH17 PCDH68 PCH68   |
| <b>Protein Name</b>              | PCD17   |
| <b>Immunogen</b>                 | Synthesized peptide derived from human PCD17 AA range: 39-89  |
| <b>Specificity</b>               | This antibody detects endogenous levels of PCD17 at Human   |
| <b>Formulation</b>               | Liquid in PBS containing 50% glycerol, 0.5% BSA and 0.02% sodium azide.   |
| <b>Source</b>                    | Polyclonal, Rabbit,IgG  |
| <b>Purification</b>              | The antibody was affinity-purified from rabbit serum by affinity-chromatography using specific immunogen.   |
| <b>Dilution</b>                  | WB 1:500-2000;IHC-p 1:50-300  |
| <b>Concentration</b>             | 1 mg/ml   |
| <b>Purity</b>                    | ≥90%  |
| <b>Storage Stability</b>         | -20°C/1 year  |
| <b>Synonyms</b>                  |   |
| <b>Observed Band</b>             |   |
| <b>Cell Pathway</b>              | Cell membrane ; Single-pass type I membrane protein .   |
| <b>Tissue Specificity</b>        |   |
| <b>Function</b>                  | function:Potential calcium-dependent cell-adhesion protein.,similarity:Contains 6 cadherin domains.,  |
| <b>Background</b>                | This gene belongs to the protocadherin gene family, a subfamily of the cadherin superfamily. The encoded protein contains six extracellular cadherin domains, a transmembrane domain, and a cytoplasmic tail differing from those of the classical cadherins. The encoded protein may play a role in the establishment and function of specific cell-cell connections in the brain. [provided by RefSeq, Jul 2008], |
| <b>matters needing attention</b> | Avoid repeated freezing and thawing!  |
| <b>Usage suggestions</b>         | This product can be used in immunological reaction related experiments. For more information, please consult technical personnel.   |



## Products Images



Western blot analysis of lysates from U2OS cells, primary antibody was diluted at 1:1000, 4° over night



Immunohistochemical analysis of paraffin-embedded human meningioma. 1, Antibody was diluted at 1:200(4° overnight). 2, Tris-EDTA, pH9.0 was used for antigen retrieval. 3, Secondary antibody was diluted at 1:200(room temperature, 45min).