



TMPS2 rabbit pAb

Catalog No	YP-Ab-12141
Isotype	IgG
Reactivity	Human; Mouse
Applications	WB
Gene Name	TMPRSS2 PRSS10
Protein Name	TMPS2
Immunogen	Synthesized peptide derived from human TMPS2 AA range: 98-148
Specificity	This antibody detects endogenous levels of TMPS2 at Human/Mouse
Formulation	Liquid in PBS containing 50% glycerol, 0.5% BSA and 0.02% sodium azide.
Source	Polyclonal, Rabbit,IgG
Purification	The antibody was affinity-purified from rabbit serum by affinity-chromatography using specific immunogen.
Dilution	WB 1: 500-2000
Concentration	1 mg/ml
Purity	≥90%
Storage Stability	-20°C/1 year
Synonyms	
Observed Band	
Cell Pathway	Cell membrane ; Single-pass type II membrane protein .; [Transmembrane protease serine 2 catalytic chain]: Secreted . Activated by cleavage and secreted. .
Tissue Specificity	Expressed in several tissues that comprise large populations of epithelial cells with the highest level of transcripts measured in the prostate gland. Expressed in type II pneumocytes in the lung (at protein level). Expressed strongly in small intestine. Also expressed in colon, stomach and salivary gland. Coexpressed with ACE2 within lung type II pneumocytes, ileal absorptive enterocytes, intestinal epithelial cells, cornea, gallbladder and nasal goblet secretory cells (Ref.21).
Function	similarity:Belongs to the peptidase S1 family.,similarity:Contains 1 LDL-receptor class A domain.,similarity:Contains 1 peptidase S1 domain.,similarity:Contains 1 SRCR domain.,subcellular location:Activated by cleavage and secreted.,tissue specificity:Expressed strongly in small intestine. Also expressed in prostate, colon, stomach and salivary gland.,
Background	This gene encodes a protein that belongs to the serine protease family. The encoded protein contains a type II transmembrane domain, a receptor class A domain, a scavenger receptor cysteine-rich domain and a protease domain. Serine proteases are known to be involved in many physiological and pathological processes. This gene was demonstrated to be up-regulated by androgenic



hormones in prostate cancer cells and down-regulated in androgen-independent prostate cancer tissue. The protease domain of this protein is thought to be cleaved and secreted into cell media after autocleavage. Alternatively spliced transcript variants encoding different isoforms have been found for this gene. [provided by RefSeq, Sep 2008],

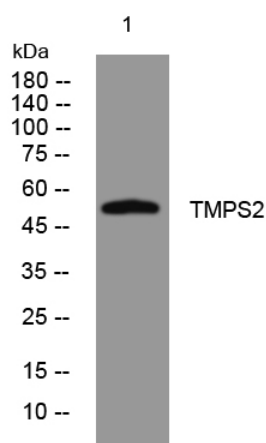
matters needing attention

Avoid repeated freezing and thawing!

Usage suggestions

This product can be used in immunological reaction related experiments. For more information, please consult technical personnel.

Products Images



Western blot analysis of lysates from THP-1 cells, primary antibody was diluted at 1:1000, 4° over night