



AAAT rabbit pAb

Catalog No	YP-Ab-12116
Isotype	IgG
Reactivity	Human; Mouse; Rat
Applications	WB
Gene Name	SLC1A5 ASCT2 M7V1 RDR RDRC
Protein Name	AAAT
Immunogen	Synthesized peptide derived from human AAAT AA range: 345-395
Specificity	This antibody detects endogenous levels of AAAT at Human/Mouse
Formulation	Liquid in PBS containing 50% glycerol, 0.5% BSA and 0.02% sodium azide.
Source	Polyclonal, Rabbit, IgG
Purification	The antibody was affinity-purified from rabbit serum by affinity-chromatography using specific immunogen.
Dilution	WB 1: 500-2000
Concentration	1 mg/ml
Purity	≥90%
Storage Stability	-20°C/1 year
Synonyms	
Observed Band	
Cell Pathway	Cell membrane ; Multi-pass membrane protein . Melanosome. Identified by mass spectrometry in melanosome fractions from stage I to stage IV.
Tissue Specificity	Placenta, lung, skeletal muscle, kidney, pancreas, and intestine.
Function	alternative products: A number of isoforms are produced by alternative initiation. Isoforms start at multiple alternative CUG and GUG codons, function: Has a broad substrate specificity, a preference for zwitterionic amino acids, and a sodium-dependence. It accepts as substrates all neutral amino acids, including glutamine, asparagine, and branched-chain and aromatic amino acids, and excludes methylated amino acids, anionic amino acids, and cationic amino acids. Act as a cell surface receptor for feline endogenous virus RD114, baboon M7 endogenous virus and type D simian retroviruses., similarity: Belongs to the sodium:dicarboxylate (SDF) symporter (TC 2.A.23) family., subcellular location: Identified by mass spectrometry in melanosome fractions from stage I to stage IV., tissue specificity: Placenta, lung, skeletal muscle, kidney, pancreas, and intestine.,
Background	The SLC1A5 gene encodes a sodium-dependent neutral amino acid transporter that can act as a receptor for RD114/type D retrovirus (Larriba et al., 2001 [PubMed 11781704]). [supplied by OMIM, Jan 2011],

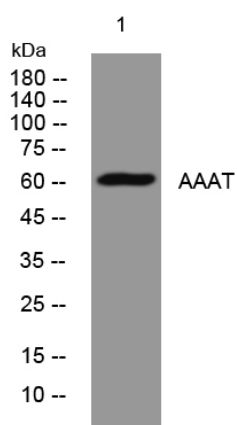
matters needing attention

Avoid repeated freezing and thawing!

Usage suggestions

This product can be used in immunological reaction related experiments. For more information, please consult technical personnel.

Products Images



Western blot analysis of lysates from HeLa cells, primary antibody was diluted at 1:1000, 4° over night