

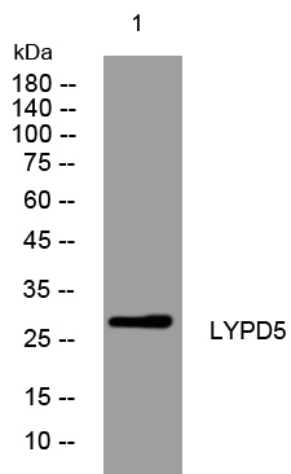


LYPD5 rabbit pAb

Catalog No	YP-Ab-12114
Isotype	IgG
Reactivity	Human; Mouse
Applications	WB
Gene Name	LYPD5 UNQ1908/PRO4356
Protein Name	LYPD5
Immunogen	Synthesized peptide derived from human LYPD5 AA range: 168-218
Specificity	This antibody detects endogenous levels of LYPD5 at Human/Mouse
Formulation	Liquid in PBS containing 50% glycerol, 0.5% BSA and 0.02% sodium azide.
Source	Polyclonal, Rabbit,IgG
Purification	The antibody was affinity-purified from rabbit serum by affinity-chromatography using specific immunogen.
Dilution	WB 1: 500-2000
Concentration	1 mg/ml
Purity	≥90%
Storage Stability	-20°C/1 year
Synonyms	
Observed Band	
Cell Pathway	Cell membrane ; Lipid-anchor, GPI-anchor .
Tissue Specificity	
Function	similarity:Contains 1 UPAR/Ly6 domain.,
Background	
matters needing attention	Avoid repeated freezing and thawing!
Usage suggestions	This product can be used in immunological reaction related experiments. For more information, please consult technical personnel.



Products Images



Western blot analysis of lysates from HpeG2 cells,
primary antibody was diluted at 1:1000, 4° over night