



# FBX18 rabbit pAb

<b>Catalog No</b>	YP-Ab-12113
<b>Isotype</b>	IgG
<b>Reactivity</b>	Human; Mouse
<b>Applications</b>	WB
<b>Gene Name</b>	FBXO18 FBH1 FBX18
<b>Protein Name</b>	FBX18
<b>Immunogen</b>	Synthesized peptide derived from human FBX18 AA range: 799-849
<b>Specificity</b>	This antibody detects endogenous levels of FBX18 at Human/Mouse
<b>Formulation</b>	Liquid in PBS containing 50% glycerol, 0.5% BSA and 0.02% sodium azide.
<b>Source</b>	Polyclonal, Rabbit,IgG
<b>Purification</b>	The antibody was affinity-purified from rabbit serum by affinity-chromatography using specific immunogen.
<b>Dilution</b>	WB 1: 500-2000
<b>Concentration</b>	1 mg/ml
<b>Purity</b>	≥90%
<b>Storage Stability</b>	-20°C/1 year
<b>Synonyms</b>	
<b>Observed Band</b>	
<b>Cell Pathway</b>	Nucleus . Chromosome . Accumulates at sites of DNA damage or replication stress (PubMed:19736316, PubMed:23677613). PCNA is required for localization to DNA damage sites (PubMed:23677613). Localizes to the nucleoplasm in absence of DNA damage (PubMed:23677613). .
<b>Tissue Specificity</b>	
<b>Function</b>	function:DNA-dependent ATPase. Unwinds double-stranded DNA in a 3' to 5' direction.,function:Probably recognizes and binds to some phosphorylated proteins and promotes their ubiquitination and degradation.,similarity:Belongs to the helicase family. UvrD subfamily.,similarity:Contains 1 F-box domain.,subunit:Part of a SCF E3 ubiquitin ligase complex consisting of SKP1, CUL1, RBX1 and FBXO18. Interacts with SKP1.,
<b>Background</b>	This gene encodes a member of the F-box protein family, members of which are characterized by an approximately 40 amino acid motif, the F-box. The F-box proteins constitute one of the four subunits of ubiquitin protein ligase complex called SCFs (SKP1-cullin-F-box), which function in phosphorylation-dependent ubiquitination. The F-box proteins are divided into three classes: Fbws containing WD-40 domains, Fbls containing leucine-rich repeats, and Fbxs containing either different protein-protein interaction modules or no recognizable motifs. The



protein encoded by this gene belongs to the Fbx class. It contains an F-box motif and seven conserved helicase motifs, and has both DNA-dependent ATPase and DNA unwinding activities. Alternatively spliced transcript variants encoding distinct isoforms have been identified for this gene. [provided by RefSeq, Jul 2008],

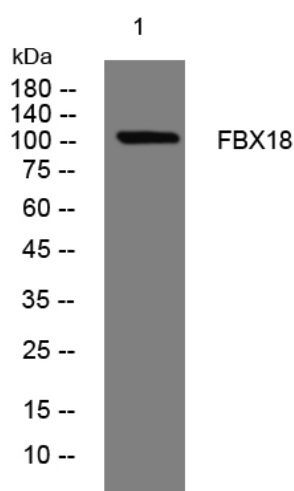
#### matters needing attention

Avoid repeated freezing and thawing!

#### Usage suggestions

This product can be used in immunological reaction related experiments. For more information, please consult technical personnel.

## Products Images



Western blot analysis of lysates from HuvEc cells, primary antibody was diluted at 1:1000, 4° over night