



# NUDT9 rabbit pAb

<b>Catalog No</b>	YP-Ab-12105
<b>Isotype</b>	IgG
<b>Reactivity</b>	Human; Mouse; Rat
<b>Applications</b>	WB
<b>Gene Name</b>	NUDT9 NUDT10 PSEC0099 UNQ3012/PRO9771
<b>Protein Name</b>	NUDT9
<b>Immunogen</b>	Synthesized peptide derived from human NUDT9 AA range: 107-157
<b>Specificity</b>	This antibody detects endogenous levels of NUDT9 at Human/Mouse/Rat
<b>Formulation</b>	Liquid in PBS containing 50% glycerol, 0.5% BSA and 0.02% sodium azide.
<b>Source</b>	Polyclonal, Rabbit, IgG
<b>Purification</b>	The antibody was affinity-purified from rabbit serum by affinity-chromatography using specific immunogen.
<b>Dilution</b>	WB 1: 500-2000
<b>Concentration</b>	1 mg/ml
<b>Purity</b>	≥90%
<b>Storage Stability</b>	-20°C/1 year
<b>Synonyms</b>	
<b>Observed Band</b>	
<b>Cell Pathway</b>	[Isoform 1]: Mitochondrion.
<b>Tissue Specificity</b>	Ubiquitously expressed but isoform 1 is the most predominant isoform.
<b>Function</b>	catalytic activity: ADP-ribose + H <sub>2</sub> O = AMP + D-ribose 5-phosphate., cofactor: Magnesium., cofactor: Manganese., function: Hydrolyzes ADP-ribose (ADPR) to AMP and ribose 5'-phosphate., induction: Isoform 1 is inhibited by fluoride and N-acetyl-p-benzoquinoneimine., similarity: Belongs to the Nudix hydrolase family. NudF subfamily., subunit: Monomer. Interacts with C17orf25., tissue specificity: Ubiquitously expressed but isoform 1 is the most predominant isoform.,
<b>Background</b>	The protein encoded by this gene belongs to the Nudix hydrolase family. Nudix boxes are found in a family of diverse enzymes that catalyze the hydrolysis of nucleoside diphosphate derivatives. This enzyme is an ADP-ribose pyrophosphatase that catalyzes the hydrolysis of ADP-ribose to AMP and ribose-5-P. It requires divalent metal ions and an intact Nudix motif for enzymatic activity. Alternatively spliced transcript variants encoding different isoforms have been found for this gene. [provided by RefSeq, Oct 2011],

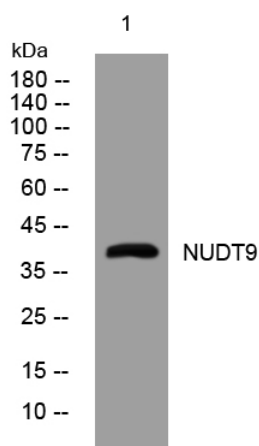
**matters needing attention**

Avoid repeated freezing and thawing!

**Usage suggestions**

This product can be used in immunological reaction related experiments. For more information, please consult technical personnel.

## Products Images



Western blot analysis of lysates from HeLa cells, primary antibody was diluted at 1:1000, 4° over night