



# AT132 rabbit pAb

<b>Catalog No</b>	YP-Ab-12099
<b>Isotype</b>	IgG
<b>Reactivity</b>	Human; Mouse
<b>Applications</b>	WB
<b>Gene Name</b>	ATP13A2 PARK9
<b>Protein Name</b>	AT132
<b>Immunogen</b>	Synthesized peptide derived from human AT132 AA range: 56-106
<b>Specificity</b>	This antibody detects endogenous levels of AT132 at Human/Mouse
<b>Formulation</b>	Liquid in PBS containing 50% glycerol, 0.5% BSA and 0.02% sodium azide.
<b>Source</b>	Polyclonal, Rabbit,IgG
<b>Purification</b>	The antibody was affinity-purified from rabbit serum by affinity-chromatography using specific immunogen.
<b>Dilution</b>	WB 1: 500-2000
<b>Concentration</b>	1 mg/ml
<b>Purity</b>	≥90%
<b>Storage Stability</b>	-20°C/1 year
<b>Synonyms</b>	
<b>Observed Band</b>	
<b>Cell Pathway</b>	Lysosome membrane ; Multi-pass membrane protein . Late endosome membrane ; Multi-pass membrane protein . Endosome, multivesicular body membrane ; Multi-pass membrane protein . Cytoplasmic vesicle, autophagosome membrane ; Multi-pass membrane protein .
<b>Tissue Specificity</b>	Expressed in brain; protein levels are markedly increased in brain from subjects with Parkinson disease and subjects with dementia with Lewy bodies. Detected in pyramidal neurons located throughout the cingulate cortex (at protein level). In the substantia nigra, it is found in neuromelanin-positive dopaminergic neurons (at protein level).
<b>Function</b>	catalytic activity:ATP + H(2)O = ADP + phosphate.,disease:Defects in ATP13A2 are the cause of Kufor-Rakeb syndrome (KRS) [MIM:606693]; also known as Parkinson disease-9. KRS is a rare hereditary disease with juvenile onset. In addition to typical signs of Parkinson disease, affected individuals show symptoms of more widespread neurodegeneration, including dementia.,similarity:Belongs to the cation transport ATPase (P-type) family.,similarity:Belongs to the cation transport ATPase (P-type) family. Type V subfamily.,
<b>Background</b>	This gene encodes a member of the P5 subfamily of ATPases which transports inorganic cations as well as other substrates. Mutations in this gene are



associated with Kufor-Rakeb syndrome (KRS), also referred to as Parkinson disease 9. Multiple transcript variants encoding different isoforms have been found for this gene.[provided by RefSeq, Nov 2008],

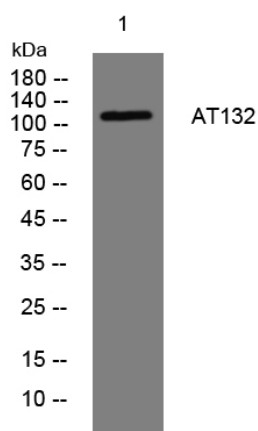
#### matters needing attention

Avoid repeated freezing and thawing!

#### Usage suggestions

This product can be used in immunological reaction related experiments. For more information, please consult technical personnel.

### Products Images



Western blot analysis of lysates from KB cells, primary antibody was diluted at 1:1000, 4°over night