



PP12C rabbit pAb

Catalog No	YP-Ab-12094
Isotype	IgG
Reactivity	Human; Mouse
Applications	WB;IHC
Gene Name	PPP1R12C LENG3 MBS85
Protein Name	PP12C
Immunogen	Synthesized peptide derived from human PP12C AA range: 542-592
Specificity	This antibody detects endogenous levels of PP12C at Human/Mouse
Formulation	Liquid in PBS containing 50% glycerol, 0.5% BSA and 0.02% sodium azide.
Source	Polyclonal, Rabbit,IgG
Purification	The antibody was affinity-purified from rabbit serum by affinity-chromatography using specific immunogen.
Dilution	WB 1:500-2000;IHC-p 1:50-300
Concentration	1 mg/ml
Purity	≥90%
Storage Stability	-20°C/1 year
Synonyms	
Observed Band	
Cell Pathway	Cytoplasm . Cytoplasm, cytoskeleton, stress fiber .
Tissue Specificity	Ubiquitously expressed. Highly expressed in heart.
Function	caution:Although assigned as two separate genes (PPP1R12C and LENG3), it is probable that LENG3 does not exist by itself and is a part of the PPP1R12C gene.,function:Regulates myosin phosphatase activity.,PTM:Phosphorylated upon DNA damage, probably by ATM or ATR.,sequence caution:Unspliced mRNA.,similarity:Contains 4 ANK repeats.,subcellular location:Along actomyosin filaments and stress fibers.,subunit:PP1 comprises a catalytic subunit, PPP1CA, PPP1CB or PPP1CC, and one or several targeting or regulatory subunits. PPP1R12C mediates binding to myosin. Interacts via its N-terminus with PPP1CB. Interacts with IL16. Interacts with the coiled-coil domain of MPRIP.,tissue specificity:Ubiquitously expressed. Highly expressed in heart.,
Background	The gene encodes a subunit of myosin phosphatase. The encoded protein regulates the catalytic activity of protein phosphatase 1 delta and assembly of the actin cytoskeleton. Alternatively spliced transcript variants encoding multiple isoforms have been observed for this gene. [provided by RefSeq, Oct 2012],



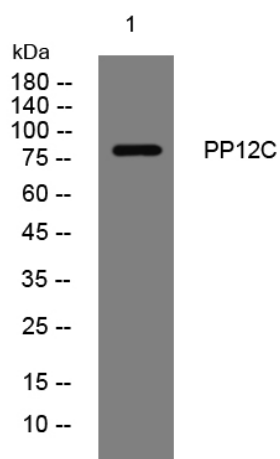
matters needing attention

Avoid repeated freezing and thawing!

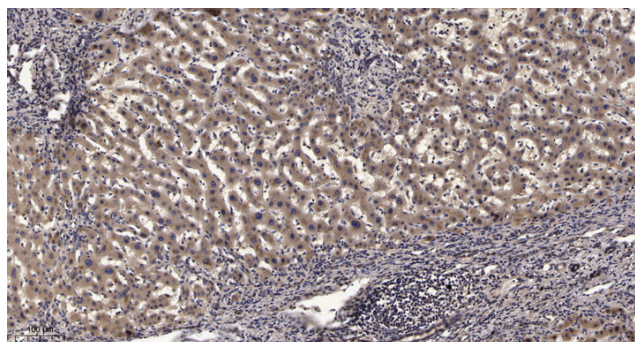
Usage suggestions

This product can be used in immunological reaction related experiments. For more information, please consult technical personnel.

Products Images



Western blot analysis of lysates from VEC cells, primary antibody was diluted at 1:1000, 4° over night



Immunohistochemical analysis of paraffin-embedded human liver cancer. 1, Antibody was diluted at 1:200(4° overnight). 2, Tris-EDTA, pH9.0 was used for antigen retrieval. 3, Secondary antibody was diluted at 1:200(room temperature, 45min).