

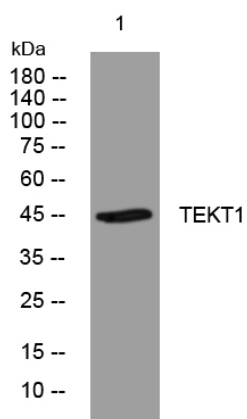


# TEKT1 rabbit pAb

<b>Catalog No</b>	YP-Ab-12090
<b>Isotype</b>	IgG
<b>Reactivity</b>	Human; Mouse; Rat
<b>Applications</b>	WB
<b>Gene Name</b>	TEKT1
<b>Protein Name</b>	TEKT1
<b>Immunogen</b>	Synthesized peptide derived from human TEKT1 AA range: 238-288
<b>Specificity</b>	This antibody detects endogenous levels of TEKT1 at Human/Mouse/Rat
<b>Formulation</b>	Liquid in PBS containing 50% glycerol, 0.5% BSA and 0.02% sodium azide.
<b>Source</b>	Polyclonal, Rabbit, IgG
<b>Purification</b>	The antibody was affinity-purified from rabbit serum by affinity-chromatography using specific immunogen.
<b>Dilution</b>	WB 1: 500-2000
<b>Concentration</b>	1 mg/ml
<b>Purity</b>	≥90%
<b>Storage Stability</b>	-20°C/1 year
<b>Synonyms</b>	
<b>Observed Band</b>	
<b>Cell Pathway</b>	Cytoplasm, cytoskeleton, cilium axoneme. Cytoplasm, cytoskeleton, flagellum axoneme.
<b>Tissue Specificity</b>	Predominantly expressed in testis.
<b>Function</b>	function: Structural component of ciliary and flagellar microtubules. Forms filamentous polymers in the walls of ciliary and flagellar microtubules., similarity: Belongs to the tektin family., tissue specificity: Predominantly expressed in testis.,
<b>Background</b>	This gene product belongs to the tektin family of proteins. Tektins comprise a family of filament-forming proteins that are coassembled with tubulins to form ciliary and flagellar microtubules. This gene is predominantly expressed in the testis and in mouse, tektin 1 mRNA was localized to the spermatocytes and round spermatids in the seminiferous tubules, indicating that it may play a role in spermatogenesis. [provided by RefSeq, Jul 2008],
<b>matters needing attention</b>	Avoid repeated freezing and thawing!

**Usage suggestions**

This product can be used in immunological reaction related experiments. For more information, please consult technical personnel.

**Products Images**

Western blot analysis of lysates from U2OS cells,  
primary antibody was diluted at 1:1000, 4° over night