

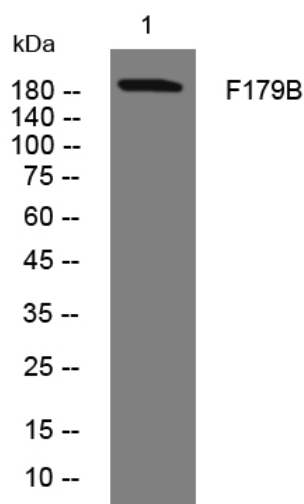


F179B rabbit pAb

Catalog No	YP-Ab-12086
Isotype	IgG
Reactivity	Human; Mouse
Applications	WB
Gene Name	FAM179B KIAA0423
Protein Name	F179B
Immunogen	Synthesized peptide derived from human F179B AA range: 1664-1714
Specificity	This antibody detects endogenous levels of F179B at Human/Mouse
Formulation	Liquid in PBS containing 50% glycerol, 0.5% BSA and 0.02% sodium azide.
Source	Polyclonal, Rabbit,IgG
Purification	The antibody was affinity-purified from rabbit serum by affinity-chromatography using specific immunogen.
Dilution	WB 1: 500-2000
Concentration	1 mg/ml
Purity	≥90%
Storage Stability	-20°C/1 year
Synonyms	
Observed Band	
Cell Pathway	Cell projection, cilium . Cytoplasm, cytoskeleton . Cytoplasm, cytoskeleton, cilium axoneme . Detected along the length of primary cilia and at the basal body. Colocalization with the cytoplasmic microtubule cytoskeleton upon heterologous expression is most likely an artifact. .
Tissue Specificity	
Function	similarity:Belongs to the FAM179 family.,similarity:Contains 6 HEAT repeats.,
Background	
matters needing attention	Avoid repeated freezing and thawing!
Usage suggestions	This product can be used in immunological reaction related experiments. For more information, please consult technical personnel.



Products Images



Western blot analysis of lysates from MCF-7 cells,
primary antibody was diluted at 1:1000, 4° over night