



# GRIK3 rabbit pAb

<b>Catalog No</b>	YP-Ab-12082
<b>Isotype</b>	IgG
<b>Reactivity</b>	Human; Mouse; Rat
<b>Applications</b>	WB
<b>Gene Name</b>	GRIK3 GLUR7
<b>Protein Name</b>	GRIK3
<b>Immunogen</b>	Synthesized peptide derived from human GRIK3 AA range: 209-259
<b>Specificity</b>	This antibody detects endogenous levels of GRIK3 at Human/Mouse/Rat
<b>Formulation</b>	Liquid in PBS containing 50% glycerol, 0.5% BSA and 0.02% sodium azide.
<b>Source</b>	Polyclonal, Rabbit, IgG
<b>Purification</b>	The antibody was affinity-purified from rabbit serum by affinity-chromatography using specific immunogen.
<b>Dilution</b>	WB 1: 500-2000
<b>Concentration</b>	1 mg/ml
<b>Purity</b>	≥90%
<b>Storage Stability</b>	-20°C/1 year
<b>Synonyms</b>	
<b>Observed Band</b>	
<b>Cell Pathway</b>	Cell membrane; Multi-pass membrane protein. Cell junction, synapse, postsynaptic cell membrane; Multi-pass membrane protein.
<b>Tissue Specificity</b>	
<b>Function</b>	function: Receptor for glutamate. L-glutamate acts as an excitatory neurotransmitter at many synapses in the central nervous system. The postsynaptic actions of Glu are mediated by a variety of receptors that are named according to their selective agonists. This receptor binds domoate > kainate >> L-glutamate = quisqualate >> AMPA = NMDA., RNA editing: Partially edited., similarity: Belongs to the glutamate-gated ion channel (TC 1.A.10) family., subunit: Homomeric. Can also coassemble with either GRIK4 or GRIK5 to form heteromeric receptors. Interacts with PRKCABP.,
<b>Background</b>	Glutamate receptors are the predominant excitatory neurotransmitter receptors in the mammalian brain and are activated in a variety of normal neurophysiologic processes. This gene product belongs to the kainate family of glutamate receptors, which are composed of four subunits and function as ligand-activated ion channels. It is not certain if the subunit encoded by this gene is subject to RNA editing as the other 2 family members (GRIK1 and GRIK2). A Ser310Ala polymorphism has been associated with schizophrenia, and there are conflicting



reports of its association with the pathogenesis of delirium tremens in alcoholics. [provided by RefSeq, Jul 2008],

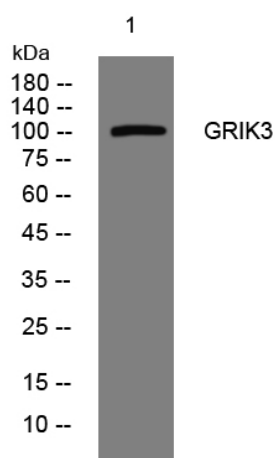
#### matters needing attention

Avoid repeated freezing and thawing!

#### Usage suggestions

This product can be used in immunological reaction related experiments. For more information, please consult technical personnel.

### Products Images



Western blot analysis of lysates from 293T cells, primary antibody was diluted at 1:1000, 4° over night