



RLP24 rabbit pAb

Catalog No	YP-Ab-12064
Isotype	IgG
Reactivity	Human; Mouse; Rat
Applications	WB; IHC
Gene Name	RSL24D1 C15orf15 RPL24L My024
Protein Name	RLP24
Immunogen	Synthesized peptide derived from human RLP24 AA range: 91-141
Specificity	This antibody detects endogenous levels of RLP24 at Human/Mouse/Rat
Formulation	Liquid in PBS containing 50% glycerol, 0.5% BSA and 0.02% sodium azide.
Source	Polyclonal, Rabbit, IgG
Purification	The antibody was affinity-purified from rabbit serum by affinity-chromatography using specific immunogen.
Dilution	WB 1:500-2000; IHC-p 1:50-300
Concentration	1 mg/ml
Purity	≥90%
Storage Stability	-20°C/1 year
Synonyms	
Observed Band	
Cell Pathway	Nucleus, nucleolus .
Tissue Specificity	
Function	function: Involved in the biogenesis of the 60S ribosomal subunit. Ensures the docking of GTPBP4/NOG1 to pre-60S particles., similarity: Belongs to the ribosomal protein L24e family., subunit: Associated with nucleolar and cytoplasmic pre-60S particles. At the end of biogenesis it dissociates from cytoplasmic pre-60S particles and is likely to be exchanged for its ribosomal homolog, RPL24.,
Background	This gene encodes a protein sharing a low level of sequence similarity with human ribosomal protein L24. Although this gene has been referred to as RPL24, L30, and 60S ribosomal protein L30 isolog in the sequence databases, it is distinct from the human genes officially named RPL24 (which itself has been referred to as ribosomal protein L30) and RPL30. The protein encoded by this gene localizes to the nucleolus and is thought to play a role in the biogenesis of the 60S ribosomal subunit. The precise function of this gene is currently unknown. This gene utilizes alternative polyadenylation signals and has multiple pseudogenes. [provided by RefSeq, Jul 2012],

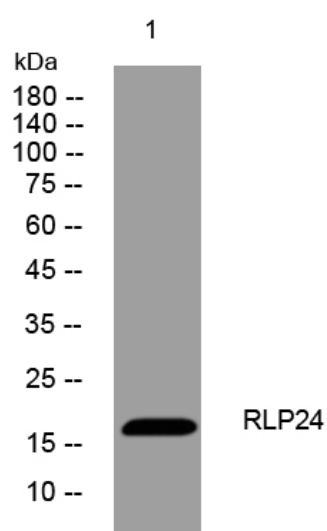
**matters needing attention**

Avoid repeated freezing and thawing!

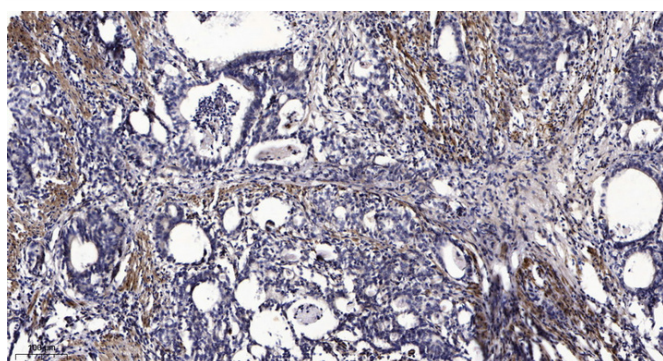
Usage suggestions

This product can be used in immunological reaction related experiments. For more information, please consult technical personnel.

Products Images



Western blot analysis of lysates from 293T cells, primary antibody was diluted at 1:1000, 4° over night



Immunohistochemical analysis of paraffin-embedded human Gastric adenocarcinoma. 1, Antibody was diluted at 1:200(4° overnight). 2, Tris-EDTA, pH9.0 was used for antigen retrieval. 3, Secondary antibody was diluted at 1:200(room temperature, 45min).