



# RAB3A rabbit pAb

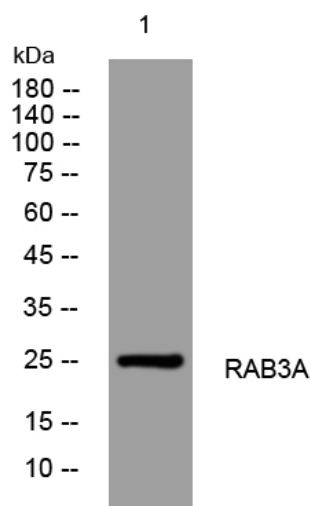
<b>Catalog No</b>	YP-Ab-12052
<b>Isotype</b>	IgG
<b>Reactivity</b>	Human; Mouse; Rat
<b>Applications</b>	WB; ELISA; IHC
<b>Gene Name</b>	RAB3A
<b>Protein Name</b>	RAB3A
<b>Immunogen</b>	Synthesized peptide derived from human RAB3A AA range: 27-77
<b>Specificity</b>	This antibody detects endogenous levels of RAB3A at Human/Mouse/Rat
<b>Formulation</b>	Liquid in PBS containing 50% glycerol, 0.5% BSA and 0.02% sodium azide.
<b>Source</b>	Polyclonal, Rabbit, IgG
<b>Purification</b>	The antibody was affinity-purified from rabbit serum by affinity-chromatography using specific immunogen.
<b>Dilution</b>	WB 1:500-2000; IHC-p 1:50-300; ELISA 2000-20000
<b>Concentration</b>	1 mg/ml
<b>Purity</b>	≥90%
<b>Storage Stability</b>	-20°C/1 year
<b>Synonyms</b>	
<b>Observed Band</b>	
<b>Cell Pathway</b>	Cytoplasm, cytosol . Lysosome . Cytoplasmic vesicle, secretory vesicle . Cell projection, axon . Cell membrane ; Lipid-anchor ; Cytoplasmic side . Cell junction, synapse, presynapse . Cell junction, synapse, postsynapse . Cycles between a vesicle-associated GTP-bound form and a cytosolic GDP-bound form. .
<b>Tissue Specificity</b>	Specifically expressed in brain.
<b>Function</b>	function: Involved in exocytosis by regulating a late step in synaptic vesicle fusion. Could play a role in neurotransmitter release by regulating membrane flow in the nerve terminal., similarity: Belongs to the small GTPase superfamily. Rab family., subunit: Heterodimer with RIMS2. Part of a ternary complex involving PCLO and EPAC2. Interacts with RPH3A. Interacts with the exocyst complex through SEC15. Binds SYTL4, RIMS1 and RIMS2. Interacts with RAB3IP. Interacts with SGSM1 and SGSM3., tissue specificity: Specifically expressed in brain.,
<b>Background</b>	
<b>matters needing attention</b>	Avoid repeated freezing and thawing!



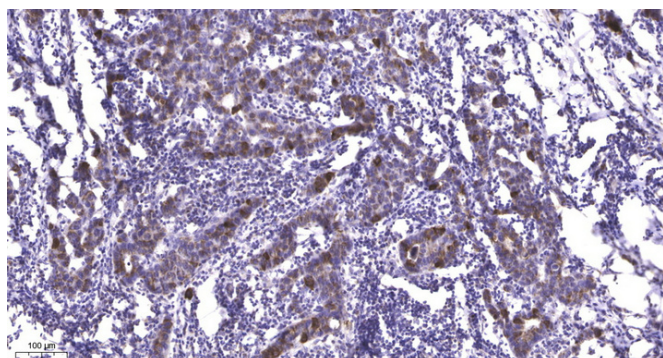
## Usage suggestions

This product can be used in immunological reaction related experiments. For more information, please consult technical personnel.

## Products Images



Western blot analysis of lysates from HpeG2 cells, primary antibody was diluted at 1:1000, 4° over night



Immunohistochemical analysis of paraffin-embedded human Breast cancer. 1, Antibody was diluted at 1:200(4° overnight). 2, Tris-EDTA, pH9.0 was used for antigen retrieval. 3, Secondary antibody was diluted at 1:200(room temperature, 45min).