

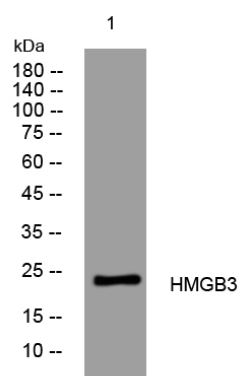


HMGB3 rabbit pAb

Catalog No	YP-Ab-12042
Isotype	IgG
Reactivity	Human; Mouse
Applications	WB
Gene Name	HMGB3 HMG2A HMG4
Protein Name	HMGB3
Immunogen	Synthesized peptide derived from human HMGB3 AA range: 123-173
Specificity	This antibody detects endogenous levels of HMGB3 at Human/Mouse
Formulation	Liquid in PBS containing 50% glycerol, 0.5% BSA and 0.02% sodium azide.
Source	Polyclonal, Rabbit,IgG
Purification	The antibody was affinity-purified from rabbit serum by affinity-chromatography using specific immunogen.
Dilution	WB 1: 500-2000
Concentration	1 mg/ml
Purity	≥90%
Storage Stability	-20°C/1 year
Synonyms	
Observed Band	
Cell Pathway	Nucleus . Chromosome . Cytoplasm .
Tissue Specificity	Expressed predominantly in placenta.
Function	function: Binds preferentially single-stranded DNA and unwinds double stranded DNA., similarity: Belongs to the HMGB family., similarity: Contains 2 HMG box DNA-binding domains., tissue specificity: Expressed predominantly in placenta.,
Background	This gene encodes a member of a family of proteins containing one or more high mobility group DNA-binding motifs. The encoded protein plays an important role in maintaining stem cell populations, and may be aberrantly expressed in tumor cells. A mutation in this gene was associated with microphthalmia, syndromic 13. There are numerous pseudogenes of this gene on multiple chromosomes. Alternative splicing results in multiple transcript variants. [provided by RefSeq, Jul 2014],
matters needing attention	Avoid repeated freezing and thawing!

Usage suggestions

This product can be used in immunological reaction related experiments. For more information, please consult technical personnel.

Products Images

Western blot analysis of lysates from U2OS cells, primary antibody was diluted at 1:1000, 4° over night