

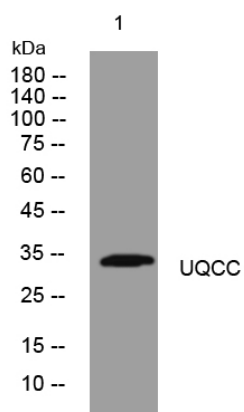


UQCC rabbit pAb

Catalog No	YP-Ab-12041
Isotype	IgG
Reactivity	Human; Mouse
Applications	WB
Gene Name	UQCC BZFB C20orf44
Protein Name	UQCC
Immunogen	Synthesized peptide derived from human UQCC AA range: 141-191
Specificity	This antibody detects endogenous levels of UQCC at Human/Mouse
Formulation	Liquid in PBS containing 50% glycerol, 0.5% BSA and 0.02% sodium azide.
Source	Polyclonal, Rabbit,IgG
Purification	The antibody was affinity-purified from rabbit serum by affinity-chromatography using specific immunogen.
Dilution	WB 1: 500-2000
Concentration	1 mg/ml
Purity	≥90%
Storage Stability	-20°C/1 year
Synonyms	
Observed Band	
Cell Pathway	Mitochondrion inner membrane . Cytoplasmic vesicle . Cytoplasmic vesicular structures. .
Tissue Specificity	
Function	sequence caution:Erroneous CDS prediction.,sequence caution:Translated as Glu.,similarity:Belongs to the CBP3 family.,subcellular location:Cytoplasmic vesicular structures.,
Background	This gene encodes a transmembrane protein that is structurally similar to the mouse basic fibroblast growth factor repressed ZIC-binding protein. In mouse this protein may be involved in fibroblast growth factor regulated growth control. In humans, polymorphisms in this gene are associated with variation in human height and osteoarthritis. Alternate splicing results in multiple transcript variants. [provided by RefSeq, May 2010],
matters needing attention	Avoid repeated freezing and thawing!

Usage suggestions

This product can be used in immunological reaction related experiments. For more information, please consult technical personnel.

Products Images

Western blot analysis of lysates from 293T cells,
primary antibody was diluted at 1:1000, 4° over night