

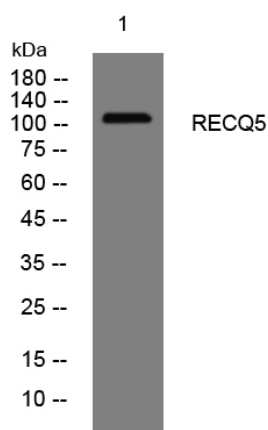


RECQ5 rabbit pAb

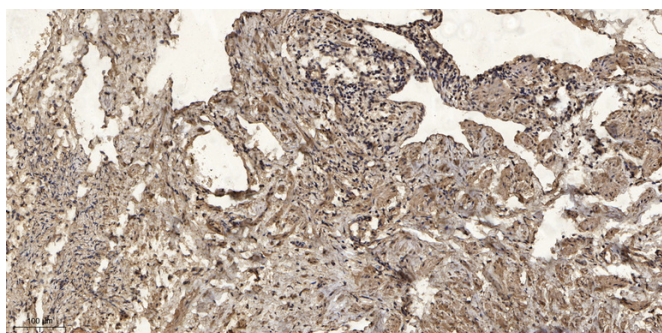
| | |
|----------------------------------|---|
| Catalog No | YP-Ab-12040 |
| Isotype | IgG |
| Reactivity | Human;Rat;Mouse; |
| Applications | WB;ELISA;IHC |
| Gene Name | RECQL5 RECQ5 |
| Protein Name | RECQ5 |
| Immunogen | Synthesized peptide derived from human RECQ5 AA range: 647-697 |
| Specificity | This antibody detects endogenous levels of RECQ5 at Human |
| Formulation | Liquid in PBS containing 50% glycerol, 0.5% BSA and 0.02% sodium azide. |
| Source | Polyclonal, Rabbit,IgG |
| Purification | The antibody was affinity-purified from rabbit serum by affinity-chromatography using specific immunogen. |
| Dilution | WB 1:500-2000;IHC-p 1:50-300; ELISA 2000-20000 |
| Concentration | 1 mg/ml |
| Purity | ≥90% |
| Storage Stability | -20°C/1 year |
| Synonyms | |
| Observed Band | |
| Cell Pathway | [Isoform Beta]: Nucleus, nucleoplasm . Nucleus . Recruited to sites of DNA damage, such as single-strand breaks and inter-strand cross-links, and at stalled replication forks. Re-localizes from the nucleolus into the nucleus after replicative stress and significantly associates with WRN during S-phase (PubMed:23180761). .; [Isoform Alpha]: Cytoplasm .; [Isoform Gamma]: Cytoplasm . |
| Tissue Specificity | Ubiquitous. |
| Function | function:May have an important role in DNA metabolism.,similarity:Belongs to the helicase family. RecQ subfamily.,similarity:Contains 1 helicase ATP-binding domain.,similarity:Contains 1 helicase C-terminal domain.,subunit:Interacts with TOP3A and TOP3B.,tissue specificity:Ubiquitous., |
| Background | The protein encoded by this gene is a helicase that is important for genome stability. The encoded protein also prevents aberrant homologous recombination by displacing RAD51 from ssDNA. Three transcript variants encoding different isoforms have been found for this gene. [provided by RefSeq, Jul 2011], |
| matters needing attention | Avoid repeated freezing and thawing! |

**Usage suggestions**

This product can be used in immunological reaction related experiments. For more information, please consult technical personnel.

Products Images

Western blot analysis of lysates from U2OS cells, primary antibody was diluted at 1:1000, 4° over night



Immunohistochemical analysis of paraffin-embedded human oophoroma. 1, Antibody was diluted at 1:200(4° overnight). 2, Tris-EDTA, pH9.0 was used for antigen retrieval. 3, Secondary antibody was diluted at 1:200(room temperature, 45min).