

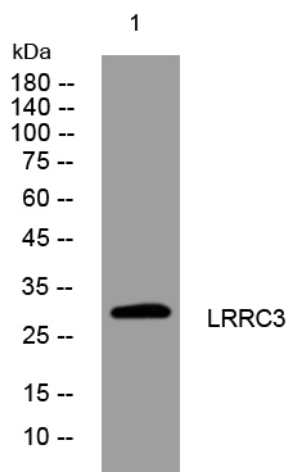


# LRRC3 rabbit pAb

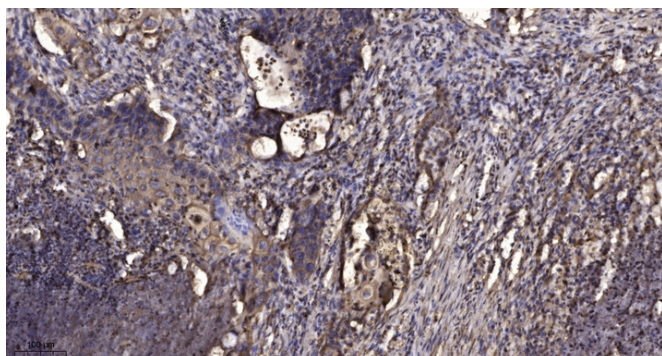
|                                  |  |
|----------------------------------|--|
| <b>Catalog No</b>                | YP-Ab-12026  |
| <b>Isotype</b>                   | IgG  |
| <b>Reactivity</b>                | Human; Mouse; Rat  |
| <b>Applications</b>              | WB; IHC  |
| <b>Gene Name</b>                 | LRRC3 C21orf102 LRRC3A UNQ9233/PRO31982  |
| <b>Protein Name</b>              | LRRC3  |
| <b>Immunogen</b>                 | Synthesized peptide derived from human LRRC3 AA range: 110-160   |
| <b>Specificity</b>               | This antibody detects endogenous levels of LRRC3 at Human/Mouse/Rat  |
| <b>Formulation</b>               | Liquid in PBS containing 50% glycerol, 0.5% BSA and 0.02% sodium azide.  |
| <b>Source</b>                    | Polyclonal, Rabbit, IgG  |
| <b>Purification</b>              | The antibody was affinity-purified from rabbit serum by affinity-chromatography using specific immunogen.  |
| <b>Dilution</b>                  | WB 1:500-2000; IHC-p 1:50-300  |
| <b>Concentration</b>             | 1 mg/ml  |
| <b>Purity</b>                    | ≥90%   |
| <b>Storage Stability</b>         | -20°C/1 year   |
| <b>Synonyms</b>                  |  |
| <b>Observed Band</b>             |  |
| <b>Cell Pathway</b>              | Membrane ; Single-pass membrane protein .  |
| <b>Tissue Specificity</b>        | Widely expressed; detected in testis, lung, small intestine, breast, brain, heart, bone marrow, placenta, colon, fetal brain, liver, fetal liver, thymus, salivary gland, spinal cord, spleen, trachea and adrenal gland.  |
| <b>Function</b>                  | similarity: Belongs to the LRRC3 family., similarity: Contains 3 LRR (leucine-rich) repeats., tissue specificity: Widely expressed; detected in testis, lung, small intestine, breast, brain, heart, bone marrow, placenta, colon, fetal brain, liver, fetal liver, thymus, salivary gland, spinal cord, spleen, trachea and adrenal gland., |
| <b>Background</b>                |  |
| <b>matters needing attention</b> | Avoid repeated freezing and thawing!   |
| <b>Usage suggestions</b>         | This product can be used in immunological reaction related experiments. For more information, please consult technical personnel.  |



## Products Images



Western blot analysis of lysates from SH-SY5Y cells, primary antibody was diluted at 1:1000, 4° over night



Immunohistochemical analysis of paraffin-embedded human Squamous cell carcinoma of lung. 1, Antibody was diluted at 1:200(4° overnight). 2, Tris-EDTA, pH9.0 was used for antigen retrieval. 3, Secondary antibody was diluted at 1:200(room temperature, 45min).