



# PR12 rabbit pAb

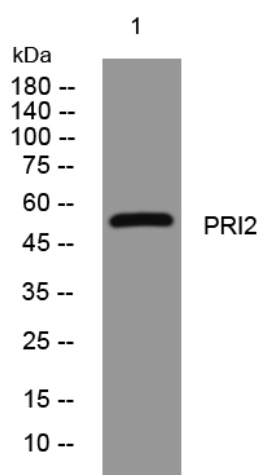
|                                  |  |
|----------------------------------|--|
| <b>Catalog No</b>                | YP-Ab-12022  |
| <b>Isotype</b>                   | IgG  |
| <b>Reactivity</b>                | Human; Mouse; Rat  |
| <b>Applications</b>              | WB; IHC  |
| <b>Gene Name</b>                 | PRIM2 PRIM2A   |
| <b>Protein Name</b>              | PR12   |
| <b>Immunogen</b>                 | Synthesized peptide derived from human PR12 AA range: 369-419  |
| <b>Specificity</b>               | This antibody detects endogenous levels of PR12 at Human/Mouse/Rat   |
| <b>Formulation</b>               | Liquid in PBS containing 50% glycerol, 0.5% BSA and 0.02% sodium azide.  |
| <b>Source</b>                    | Polyclonal, Rabbit, IgG  |
| <b>Purification</b>              | The antibody was affinity-purified from rabbit serum by affinity-chromatography using specific immunogen.  |
| <b>Dilution</b>                  | WB 1:500-2000; IHC-p 1:50-300  |
| <b>Concentration</b>             | 1 mg/ml  |
| <b>Purity</b>                    | ≥90%   |
| <b>Storage Stability</b>         | -20°C/1 year   |
| <b>Synonyms</b>                  |  |
| <b>Observed Band</b>             |  |
| <b>Cell Pathway</b>              | nucleoplasm, alpha DNA polymerase:primase complex, primosome complex,  |
| <b>Tissue Specificity</b>        |  |
| <b>Function</b>                  | function: DNA primase is the polymerase that synthesizes small RNA primers for the Okazaki fragments made during discontinuous DNA replication., similarity: Belongs to the eukaryotic-type primase large subunit family., subunit: Heterodimer of a small subunit and a large subunit.,   |
| <b>Background</b>                | This gene encodes the 58 kilodalton subunit of DNA primase, an enzyme that plays a key role in the replication of DNA. The encoded protein forms a heterodimer with a 49 kilodalton subunit. This heterodimer functions as a DNA-directed RNA polymerase to synthesize small RNA primers that are used to create Okazaki fragments on the lagging strand of the DNA. Alternative splicing of this gene results in multiple transcript variants. This gene has a related pseudogene, which is also present on chromosome 6. [provided by RefSeq, Apr 2014], |
| <b>matters needing attention</b> | Avoid repeated freezing and thawing!   |



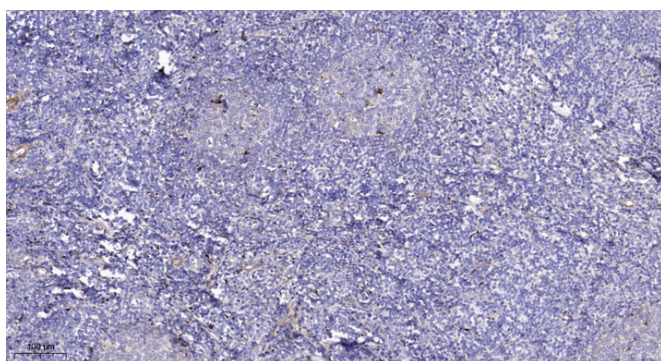
## Usage suggestions

This product can be used in immunological reaction related experiments. For more information, please consult technical personnel.

## Products Images



Western blot analysis of lysates from THP-1 cells, primary antibody was diluted at 1:1000, 4° over night



Immunohistochemical analysis of paraffin-embedded human tonsil. 1, Antibody was diluted at 1:200(4° overnight). 2, Tris-EDTA, pH9.0 was used for antigen retrieval. 3, Secondary antibody was diluted at 1:200(room temperature, 45min).