

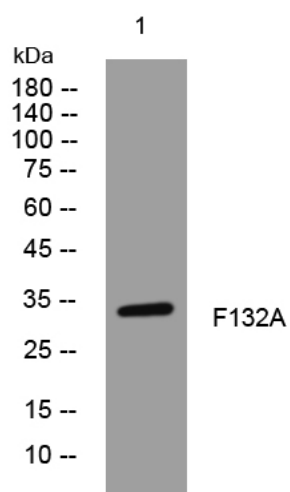


# F132A rabbit pAb

<b>Catalog No</b>	YP-Ab-12020
<b>Isotype</b>	IgG
<b>Reactivity</b>	Human; Mouse
<b>Applications</b>	WB
<b>Gene Name</b>	FAM132A C1QDC2
<b>Protein Name</b>	F132A
<b>Immunogen</b>	Synthesized peptide derived from human F132A AA range: 193-243
<b>Specificity</b>	This antibody detects endogenous levels of F132A at Human/Mouse
<b>Formulation</b>	Liquid in PBS containing 50% glycerol, 0.5% BSA and 0.02% sodium azide.
<b>Source</b>	Polyclonal, Rabbit,IgG
<b>Purification</b>	The antibody was affinity-purified from rabbit serum by affinity-chromatography using specific immunogen.
<b>Dilution</b>	WB 1: 500-2000
<b>Concentration</b>	1 mg/ml
<b>Purity</b>	≥90%
<b>Storage Stability</b>	-20°C/1 year
<b>Synonyms</b>	
<b>Observed Band</b>	
<b>Cell Pathway</b>	[Adipolin fC1QTNF12]: Secreted .; [Adipolin gC1QTNF12]: Secreted . In sera is the predominant form. .
<b>Tissue Specificity</b>	Predominantly expressed by adipose tissues.
<b>Function</b>	similarity:Belongs to the FAM132 family.,
<b>Background</b>	
<b>matters needing attention</b>	Avoid repeated freezing and thawing!
<b>Usage suggestions</b>	This product can be used in immunological reaction related experiments. For more information, please consult technical personnel.



## Products Images



Western blot analysis of lysates from MCF-7 cells,  
primary antibody was diluted at 1:1000, 4° over night