



# SLTM rabbit pAb

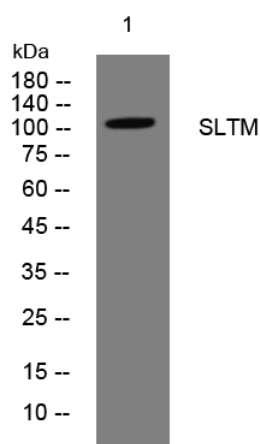
<b>Catalog No</b>	YP-Ab-11998
<b>Isotype</b>	IgG
<b>Reactivity</b>	Human; Mouse
<b>Applications</b>	WB;IHC
<b>Gene Name</b>	SLTM MET
<b>Protein Name</b>	SLTM
<b>Immunogen</b>	Synthesized peptide derived from human SLTM AA range: 562-612
<b>Specificity</b>	This antibody detects endogenous levels of SLTM at Human/Mouse
<b>Formulation</b>	Liquid in PBS containing 50% glycerol, 0.5% BSA and 0.02% sodium azide.
<b>Source</b>	Polyclonal, Rabbit,IgG
<b>Purification</b>	The antibody was affinity-purified from rabbit serum by affinity-chromatography using specific immunogen.
<b>Dilution</b>	WB 1:500-2000;IHC-p 1:50-300
<b>Concentration</b>	1 mg/ml
<b>Purity</b>	≥90%
<b>Storage Stability</b>	-20°C/1 year
<b>Synonyms</b>	
<b>Observed Band</b>	
<b>Cell Pathway</b>	Nucleus . Detected in punctate structures. .
<b>Tissue Specificity</b>	
<b>Function</b>	function:When overexpressed, acts as a general inhibitor of transcription that eventually leads to apoptosis.,PTM:Phosphorylated upon DNA damage, probably by ATM or ATR.,sequence caution:Contaminating sequence. Potential poly-A sequence.,sequence caution:Translation N-terminally extended.,similarity:Contains 1 RRM (RNA recognition motif) domain.,similarity:Contains 1 SAP domain.,subcellular location:Detected in punctate structures.,
<b>Background</b>	
<b>matters needing attention</b>	Avoid repeated freezing and thawing!



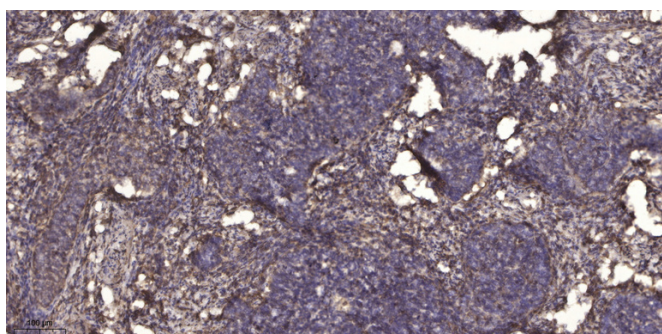
## Usage suggestions

This product can be used in immunological reaction related experiments. For more information, please consult technical personnel.

## Products Images



Western blot analysis of lysates from KB cells, primary antibody was diluted at 1:1000, 4° over night



Immunohistochemical analysis of paraffin-embedded human cervical carcinoma. 1, Antibody was diluted at 1:200(4° overnight). 2, Tris-EDTA, pH9.0 was used for antigen retrieval. 3, Secondary antibody was diluted at 1:200(room temperature, 45min).