



MAN1 rabbit pAb

Catalog No	YP-Ab-11997
Isotype	IgG
Reactivity	Human; Mouse
Applications	WB
Gene Name	LEMD3 MAN1
Protein Name	MAN1
Immunogen	Synthesized peptide derived from human MAN1 AA range: 61-111
Specificity	This antibody detects endogenous levels of MAN1 at Human/Mouse
Formulation	Liquid in PBS containing 50% glycerol, 0.5% BSA and 0.02% sodium azide.
Source	Polyclonal, Rabbit,IgG
Purification	The antibody was affinity-purified from rabbit serum by affinity-chromatography using specific immunogen.
Dilution	WB 1: 500-2000
Concentration	1 mg/ml
Purity	≥90%
Storage Stability	-20°C/1 year
Synonyms	
Observed Band	
Cell Pathway	Nucleus inner membrane ; Multi-pass membrane protein .
Tissue Specificity	Heart, brain, placenta, lung, liver and skeletal muscle.
Function	disease:Defects in LEMD3 are a cause of melorheostosis [MIM:155950]. Melorheostosis is a rare mesenchymal dysplasia and one of the sclerosing bone disorders. It is caused by a developmental error, with a sclerotomal distribution, frequently involving one limb. It may be asymptomatic, but pain, stiffness with limitation of motion, leg-length discrepancy and limb deformity may occur.,disease:Defects in LEMD3 are the cause of Buschke-Ollendorff syndrome (BOS) [MIM:166700]; also known as dermatosteopoikilosis or disseminated dermatofibrosis with osteopoikilosis or dermatofibrosis lenticularis disseminata with osteopoikilosis or osteopathia condensans disseminata. BOS refers to the association of osteopoikilosis with disseminated connective-tissue nevi. Osteopoikilosis is a skeletal dysplasia characterized by a symmetric but unequal distribution of multiple hyperostotic areas in different pa
Background	This locus encodes a LEM domain-containing protein. The encoded protein functions to antagonize transforming growth factor-beta signaling at the inner nuclear membrane. Two transcript variants encoding different isoforms have been



found for this gene. Mutations in this gene have been associated with osteopoikilosis, Buschke-Ollendorff syndrome and melorheostosis.[provided by RefSeq, Nov 2009],

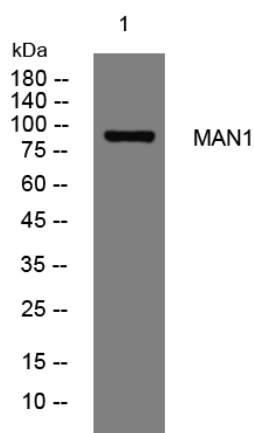
matters needing attention

Avoid repeated freezing and thawing!

Usage suggestions

This product can be used in immunological reaction related experiments. For more information, please consult technical personnel.

Products Images



Western blot analysis of lysates from MCF-7 cells, primary antibody was diluted at 1:1000, 4° over night