



# VCX3 rabbit pAb

<b>Catalog No</b>	YP-Ab-11989
<b>Isotype</b>	IgG
<b>Reactivity</b>	Human;Rat;Mouse;
<b>Applications</b>	WB
<b>Gene Name</b>	VCX3A VCX3 VCX8R VCXA
<b>Protein Name</b>	VCX3
<b>Immunogen</b>	Synthesized peptide derived from human VCX3 AA range: 40-90
<b>Specificity</b>	This antibody detects endogenous levels of VCX3 at Human
<b>Formulation</b>	Liquid in PBS containing 50% glycerol, 0.5% BSA and 0.02% sodium azide.
<b>Source</b>	Polyclonal, Rabbit,IgG
<b>Purification</b>	The antibody was affinity-purified from rabbit serum by affinity-chromatography using specific immunogen.
<b>Dilution</b>	WB 1: 500-2000
<b>Concentration</b>	1 mg/ml
<b>Purity</b>	≥90%
<b>Storage Stability</b>	-20°C/1 year
<b>Synonyms</b>	
<b>Observed Band</b>	
<b>Cell Pathway</b>	nucleus,nucleolus,
<b>Tissue Specificity</b>	Expressed exclusively in testis.
<b>Function</b>	disease:Defects in VCX3A are associated with some forms of X-linked nonspecific mental retardation.,function:May mediate a process in spermatogenesis or may play a role in sex ratio distortion.,similarity:Belongs to the VCX/VCY family.,tissue specificity:Expressed exclusively in testis.,
<b>Background</b>	This gene belongs to the VCX/Y gene family, which has multiple members on both X and Y chromosomes, and all are expressed exclusively in male germ cells. The X-linked members are clustered on chromosome Xp22 and Y-linked members are two identical copies of the gene within a palindromic region on Yq11. The family members share a high degree of sequence identity, with the exception that a 30-bp unit is tandemly repeated in X-linked members but occurs only once in Y-linked members. The VCX gene cluster is polymorphic in terms of copy number; different individuals may have a different number of VCX genes. VCX/Y genes encode small and highly charged proteins of unknown function. The presence of a putative bipartite nuclear localization signal suggests that VCX/Y members are nuclear proteins. This gene contains 8 repeats of the 30-bp unit. [provided by

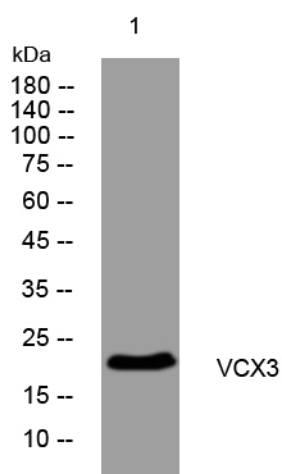
RefSeq, Jul 2008],

**matters needing attention**

Avoid repeated freezing and thawing!

**Usage suggestions**

This product can be used in immunological reaction related experiments. For more information, please consult technical personnel.

**Products Images**Western blot analysis of lysates from A549 cells,  
primary antibody was diluted at 1:1000, 4° over night