

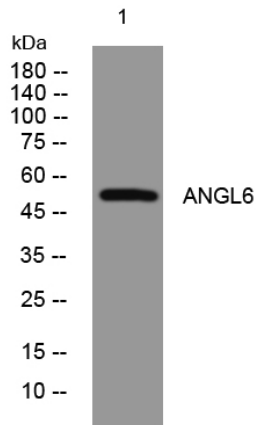


ANGL6 rabbit pAb

Catalog No	YP-Ab-11981
Isotype	IgG
Reactivity	Human; Mouse
Applications	WB
Gene Name	ANGPTL6 AGF ARP5 UNQ152/PRO178
Protein Name	ANGL6
Immunogen	Synthesized peptide derived from human ANGL6 AA range: 216-266
Specificity	This antibody detects endogenous levels of ANGL6 at Human/Mouse
Formulation	Liquid in PBS containing 50% glycerol, 0.5% BSA and 0.02% sodium azide.
Source	Polyclonal, Rabbit,IgG
Purification	The antibody was affinity-purified from rabbit serum by affinity-chromatography using specific immunogen.
Dilution	WB 1: 500-2000
Concentration	1 mg/ml
Purity	≥90%
Storage Stability	-20°C/1 year
Synonyms	
Observed Band	
Cell Pathway	Secreted .
Tissue Specificity	
Function	function:May play a role in the wound healing process. May promote epidermal proliferation, remodeling and regeneration. May promote the chemotactic activity of endothelial cells and induce neovascularization. May counteract high-fat diet-induced obesity and related insulin resistance through increased energy expenditure.,similarity:Contains 1 fibrinogen C-terminal domain.,
Background	
matters needing attention	Avoid repeated freezing and thawing!
Usage suggestions	This product can be used in immunological reaction related experiments. For more information, please consult technical personnel.



Products Images



Western blot analysis of lysates from CACO2 cells,
primary antibody was diluted at 1:1000, 4°over night