



ISM2 rabbit pAb

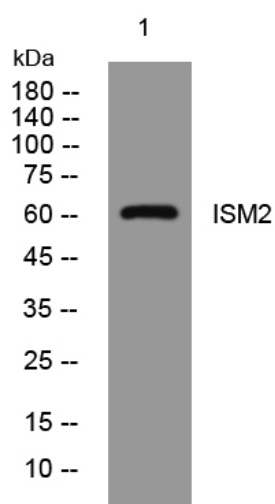
Catalog No	YP-Ab-11967
Isotype	IgG
Reactivity	Human;Rat;Mouse;
Applications	WB;IHC
Gene Name	ISM2 TAIL1 THSD3 PSEC0137
Protein Name	ISM2
Immunogen	Synthesized peptide derived from human ISM2 AA range: 65-115
Specificity	This antibody detects endogenous levels of ISM2 at Human
Formulation	Liquid in PBS containing 50% glycerol, 0.5% BSA and 0.02% sodium azide.
Source	Polyclonal, Rabbit,IgG
Purification	The antibody was affinity-purified from rabbit serum by affinity-chromatography using specific immunogen.
Dilution	WB 1:500-2000;IHC-p 1:50-300
Concentration	1 mg/ml
Purity	≥90%
Storage Stability	-20°C/1 year
Synonyms	
Observed Band	
Cell Pathway	Secreted .
Tissue Specificity	Expressed at high levels in the placenta and at moderate levels in the pancreas, kidney, heart, liver, lung, brain and skeletal muscle.
Function	similarity:Belongs to the isthmin family.,similarity:Contains 1 AMOP domain.,similarity:Contains 1 TSP type-1 domain.,tissue specificity:Expressed at high levels in the placenta and at moderate levels in the pancreas, kidney, heart, liver, lung, brain and skeletal muscle.,
Background	The protein encoded by this gene contains a type 1 thrombospondin domain, which is present in thrombospondin, a number of proteins involved in the complement pathway, as well as in extracellular matrix proteins. Two alternatively spliced transcript variants encoding distinct isoforms have been observed. [provided by RefSeq, Mar 2009],
matters needing attention	Avoid repeated freezing and thawing!



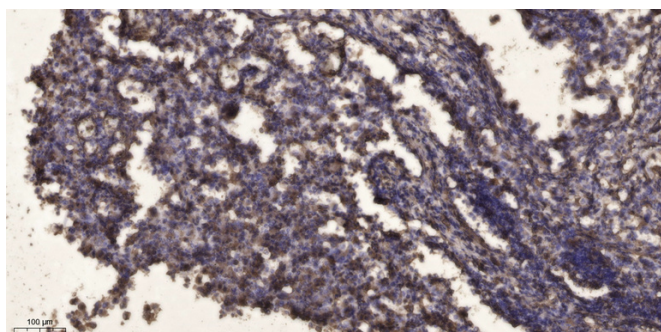
Usage suggestions

This product can be used in immunological reaction related experiments. For more information, please consult technical personnel.

Products Images



Western blot analysis of lysates from HuvEc cells, primary antibody was diluted at 1:1000, 4° over night



Immunohistochemical analysis of paraffin-embedded human Squamous cell carcinoma of lung. 1, Antibody was diluted at 1:200(4° overnight). 2, Tris-EDTA, pH9.0 was used for antigen retrieval. 3, Secondary antibody was diluted at 1:200(room temperature, 45min).