



TYW2 rabbit pAb

| | |
|---------------------------|--|
| Catalog No | YP-Ab-11966 |
| Isotype | IgG |
| Reactivity | Human; Mouse; Rat |
| Applications | WB |
| Gene Name | TRMT12 TRM12 TYW2 |
| Protein Name | TYW2 |
| Immunogen | Synthesized peptide derived from human TYW2 AA range: 11-61 |
| Specificity | This antibody detects endogenous levels of TYW2 at Human/Mouse/Rat |
| Formulation | Liquid in PBS containing 50% glycerol, 0.5% BSA and 0.02% sodium azide. |
| Source | Polyclonal, Rabbit, IgG |
| Purification | The antibody was affinity-purified from rabbit serum by affinity-chromatography using specific immunogen. |
| Dilution | WB 1: 500-2000 |
| Concentration | 1 mg/ml |
| Purity | ≥90% |
| Storage Stability | -20°C/1 year |
| Synonyms | |
| Observed Band | |
| Cell Pathway | |
| Tissue Specificity | |
| Function | function: Probable S-adenosyl-L-methionine-dependent methyltransferase that acts as a component of the wybutosine biosynthesis pathway. Wybutosine is a hyper modified guanosine with a tricyclic base found at the 3'-position adjacent to the anticodon of eukaryotic phenylalanine tRNA. pathway: tRNA modification; wybutosine-tRNA(Phe) biosynthesis. sequence caution: Contaminating sequence. Potential poly-A sequence starting in position 371. sequence caution: Translation N-terminally shortened. similarity: Belongs to the RNA methyltransferase trmD family. TYW2 subfamily. |
| Background | Wybutosine (yW) is a hypermodified guanosine at the 3-prime position adjacent to the anticodon of phenylalanine tRNA that stabilizes codon-anticodon interactions during decoding on the ribosome. TRMT12 is the human homolog of a yeast gene essential for yW synthesis (Noma and Suzuki, 2006). [supplied by OMIM, Mar 2008], |

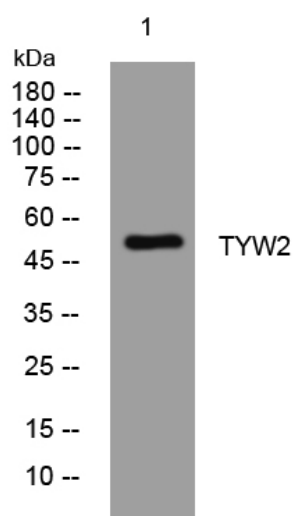
matters needing attention

Avoid repeated freezing and thawing!

Usage suggestions

This product can be used in immunological reaction related experiments. For more information, please consult technical personnel.

Products Images



Western blot analysis of lysates from HeLa cells, primary antibody was diluted at 1:1000, 4° over night