



RBM25 rabbit pAb

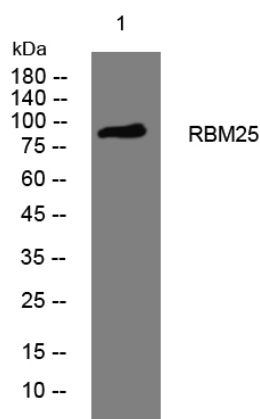
Catalog No	YP-Ab-11959
Isotype	IgG
Reactivity	Human; Mouse
Applications	WB;IHC
Gene Name	RBM25 RNPC7
Protein Name	RBM25
Immunogen	Synthesized peptide derived from human RBM25 AA range: 763-813
Specificity	This antibody detects endogenous levels of RBM25 at Human/Mouse
Formulation	Liquid in PBS containing 50% glycerol, 0.5% BSA and 0.02% sodium azide.
Source	Polyclonal, Rabbit,IgG
Purification	The antibody was affinity-purified from rabbit serum by affinity-chromatography using specific immunogen.
Dilution	WB 1:500-2000;IHC-p 1:50-300
Concentration	1 mg/ml
Purity	≥90%
Storage Stability	-20°C/1 year
Synonyms	
Observed Band	
Cell Pathway	Nucleus speckle. Cytoplasm. Colocalizes predominantly, with SFRS2 and LUC7L3 splicing factors, in nuclear speckles. Cytoplasmic localization is faint.
Tissue Specificity	
Function	PTM:Sumoylated.,sequence caution:Contaminating sequence. Potential poly-A sequence.,sequence caution:Translation N-terminally extended.,similarity:Contains 1 PWI domain.,similarity:Contains 1 RRM (RNA recognition motif) domain.,subcellular location:Detected predominantly in nuclear speckles. Cytoplasmic localization is faint.,subunit:Interacts with SRRM1. Specifically associates with functional splicing complexes, including Sm proteins and U1, U2, U4, U5 and U6 snRNAs. Associates with exon junction complex (EJC) proteins, including APEX1, BAT1, NCBP1, RBM8A and RNPS1. Interaction with NCBP1 is RNA-dependent.,
Background	
matters needing attention	Avoid repeated freezing and thawing!



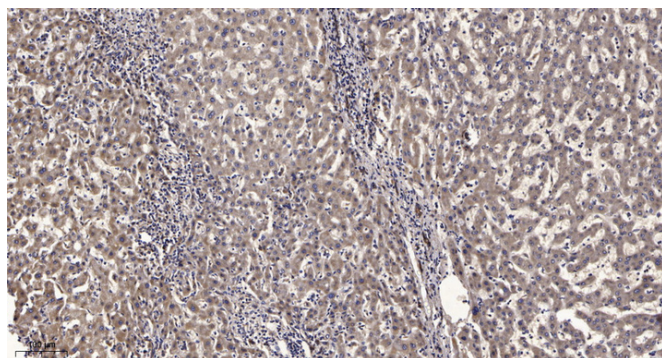
Usage suggestions

This product can be used in immunological reaction related experiments. For more information, please consult technical personnel.

Products Images



Western blot analysis of lysates from VEC cells, primary antibody was diluted at 1:1000, 4° over night



Immunohistochemical analysis of paraffin-embedded human liver cancer. 1, Antibody was diluted at 1:200(4° overnight). 2, Tris-EDTA, pH9.0 was used for antigen retrieval. 3, Secondary antibody was diluted at 1:200(room temperature, 45min).