

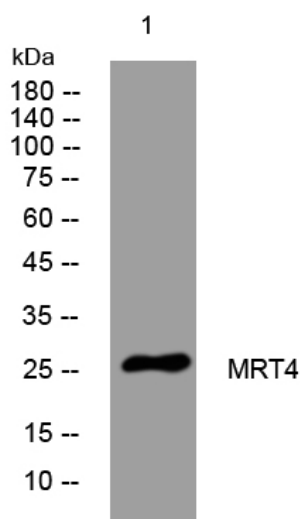


MRT4 rabbit pAb

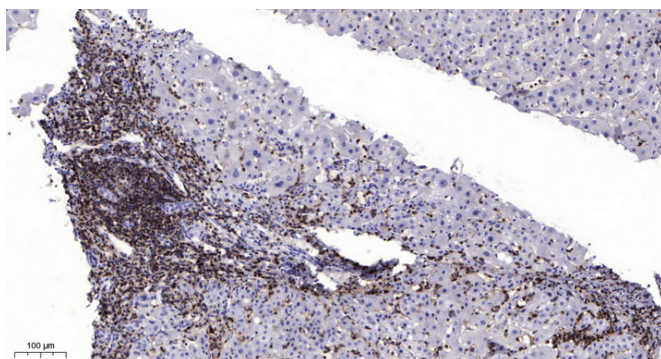
Catalog No	YP-Ab-11948
Isotype	IgG
Reactivity	Human; Mouse
Applications	WB;IHC
Gene Name	MRT04 C1orf33 MRT4
Protein Name	MRT4
Immunogen	Synthesized peptide derived from human MRT4 AA range: 103-153
Specificity	This antibody detects endogenous levels of MRT4 at Human/Mouse
Formulation	Liquid in PBS containing 50% glycerol, 0.5% BSA and 0.02% sodium azide.
Source	Polyclonal, Rabbit,IgG
Purification	The antibody was affinity-purified from rabbit serum by affinity-chromatography using specific immunogen.
Dilution	WB 1:500-2000;IHC-p 1:50-300
Concentration	1 mg/ml
Purity	≥90%
Storage Stability	-20°C/1 year
Synonyms	
Observed Band	
Cell Pathway	Nucleus, nucleolus . Cytoplasm . Shuttles between the nucleus and the cytoplasm. .
Tissue Specificity	
Function	function:Involved in mRNA turnover and ribosome assembly.,similarity:Belongs to the ribosomal protein L10P family.,
Background	This gene encodes a protein sharing a low level of sequence similarity with ribosomal protein P0. While the precise function of the encoded protein is currently unknown, it appears to be involved in mRNA turnover and ribosome assembly. [provided by RefSeq, Jul 2008],
matters needing attention	Avoid repeated freezing and thawing!
Usage suggestions	This product can be used in immunological reaction related experiments. For more information, please consult technical personnel.



Products Images



Western blot analysis of lysates from THP-1 cells, primary antibody was diluted at 1:1000, 4° over night



Immunohistochemical analysis of paraffin-embedded human liver cancer. 1, Antibody was diluted at 1:200(4° overnight). 2, Tris-EDTA, pH9.0 was used for antigen retrieval. 3, Secondary antibody was diluted at 1:200(room temperature, 45min).