

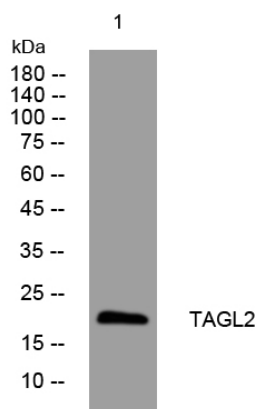


TAGL2 rabbit pAb

Catalog No	YP-Ab-11947
Isotype	IgG
Reactivity	Human; Mouse; Rat
Applications	WB
Gene Name	TAGLN2 KIAA0120 CDABP0035
Protein Name	TAGL2
Immunogen	Synthesized peptide derived from human TAGL2 AA range: 90-140
Specificity	This antibody detects endogenous levels of TAGL2 at Human/Mouse/Rat
Formulation	Liquid in PBS containing 50% glycerol, 0.5% BSA and 0.02% sodium azide.
Source	Polyclonal, Rabbit, IgG
Purification	The antibody was affinity-purified from rabbit serum by affinity-chromatography using specific immunogen.
Dilution	WB 1: 500-2000
Concentration	1 mg/ml
Purity	≥90%
Storage Stability	-20°C/1 year
Synonyms	
Observed Band	
Cell Pathway	cell-cell adherens junction, vesicle, extracellular exosome,
Tissue Specificity	Expressed in epididymis (at protein level).
Function	similarity: Belongs to the calponin family., similarity: Contains 1 calponin-like repeat., similarity: Contains 1 CH (calponin-homology) domain.,
Background	The protein encoded by this gene is similar to the protein transgelin, which is one of the earliest markers of differentiated smooth muscle. The specific function of this protein has not yet been determined, although it is thought to be a tumor suppressor. Multiple transcript variants encoding different isoforms have been found for this gene. [provided by RefSeq, Mar 2013],
matters needing attention	Avoid repeated freezing and thawing!
Usage suggestions	This product can be used in immunological reaction related experiments. For more information, please consult technical personnel.



Products Images



Western blot analysis of lysates from HCT116 cells,
primary antibody was diluted at 1:1000, 4°over night