

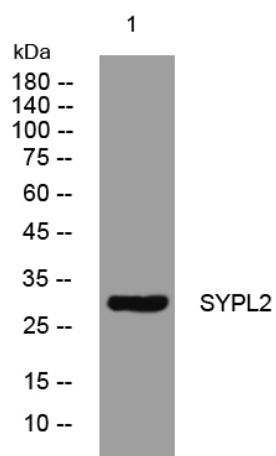


# SYPL2 rabbit pAb

<b>Catalog No</b>	YP-Ab-11935
<b>Isotype</b>	IgG
<b>Reactivity</b>	Human; Mouse
<b>Applications</b>	WB
<b>Gene Name</b>	SYPL2
<b>Protein Name</b>	SYPL2
<b>Immunogen</b>	Synthesized peptide derived from human SYPL2 AA range: 160-210
<b>Specificity</b>	This antibody detects endogenous levels of SYPL2 at Human/Mouse
<b>Formulation</b>	Liquid in PBS containing 50% glycerol, 0.5% BSA and 0.02% sodium azide.
<b>Source</b>	Polyclonal, Rabbit,IgG
<b>Purification</b>	The antibody was affinity-purified from rabbit serum by affinity-chromatography using specific immunogen.
<b>Dilution</b>	WB 1: 500-2000
<b>Concentration</b>	1 mg/ml
<b>Purity</b>	≥90%
<b>Storage Stability</b>	-20°C/1 year
<b>Synonyms</b>	
<b>Observed Band</b>	
<b>Cell Pathway</b>	Membrane ; Multi-pass membrane protein . Triad junction, the junctional complex between the transverse tubule and the sarcoplasmic reticulum. .
<b>Tissue Specificity</b>	
<b>Function</b>	function:Involved in communication between the T-tubular and junctional sarcoplasmic reticulum (SR) membranes.,similarity:Belongs to the synaptophysin/synaptobrevin family.,similarity:Contains 1 MARVEL domain.,subcellular location:Triad junction, the junctional complex between the transverse tubule and the sarcoplasmic reticulum.,
<b>Background</b>	
<b>matters needing attention</b>	Avoid repeated freezing and thawing!
<b>Usage suggestions</b>	This product can be used in immunological reaction related experiments. For more information, please consult technical personnel.



## Products Images



Western blot analysis of lysates from HpeG2 cells,  
primary antibody was diluted at 1:1000, 4°over night