

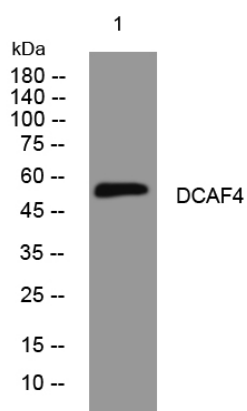


# DCAF4 rabbit pAb

<b>Catalog No</b>	YP-Ab-11923
<b>Isotype</b>	IgG
<b>Reactivity</b>	Human;Rat;Mouse;
<b>Applications</b>	WB
<b>Gene Name</b>	DCAF4 WDR21 WDR21A
<b>Protein Name</b>	DCAF4
<b>Immunogen</b>	Synthesized peptide derived from human DCAF4 AA range: 385-435
<b>Specificity</b>	This antibody detects endogenous levels of DCAF4 at Human
<b>Formulation</b>	Liquid in PBS containing 50% glycerol, 0.5% BSA and 0.02% sodium azide.
<b>Source</b>	Polyclonal, Rabbit,IgG
<b>Purification</b>	The antibody was affinity-purified from rabbit serum by affinity-chromatography using specific immunogen.
<b>Dilution</b>	WB 1: 500-2000
<b>Concentration</b>	1 mg/ml
<b>Purity</b>	≥90%
<b>Storage Stability</b>	-20°C/1 year
<b>Synonyms</b>	
<b>Observed Band</b>	
<b>Cell Pathway</b>	Cul4-RING E3 ubiquitin ligase complex,
<b>Tissue Specificity</b>	
<b>Function</b>	
<b>Background</b>	This gene encodes a WD repeat-containing protein that interacts with the Cul4-Ddb1 E3 ligase macromolecular complex. Multiple alternatively spliced transcript variants have been found for this gene. [provided by RefSeq, Jul 2009],
<b>matters needing attention</b>	Avoid repeated freezing and thawing!
<b>Usage suggestions</b>	This product can be used in immunological reaction related experiments. For more information, please consult technical personnel.



## Products Images



Western blot analysis of lysates from Jarkat cells,  
primary antibody was diluted at 1:1000, 4° over night