

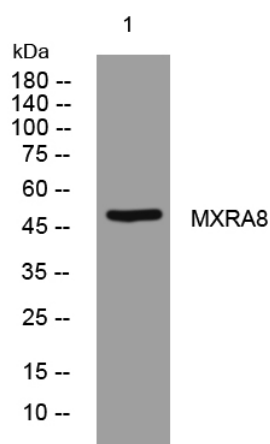


# MXRA8 rabbit pAb

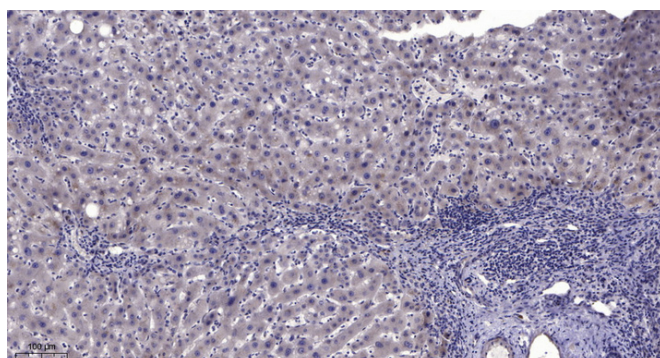
<b>Catalog No</b>	YP-Ab-11918
<b>Isotype</b>	IgG
<b>Reactivity</b>	Human; Mouse; Rat
<b>Applications</b>	WB; IHC
<b>Gene Name</b>	MXRA8
<b>Protein Name</b>	MXRA8
<b>Immunogen</b>	Synthesized peptide derived from human MXRA8 AA range: 42-92
<b>Specificity</b>	This antibody detects endogenous levels of MXRA8 at Human/Mouse/Rat
<b>Formulation</b>	Liquid in PBS containing 50% glycerol, 0.5% BSA and 0.02% sodium azide.
<b>Source</b>	Polyclonal, Rabbit, IgG
<b>Purification</b>	The antibody was affinity-purified from rabbit serum by affinity-chromatography using specific immunogen.
<b>Dilution</b>	WB 1:500-2000; IHC-p 1:50-300
<b>Concentration</b>	1 mg/ml
<b>Purity</b>	≥90%
<b>Storage Stability</b>	-20°C/1 year
<b>Synonyms</b>	
<b>Observed Band</b>	
<b>Cell Pathway</b>	Cell membrane ; Single-pass type I membrane protein . Cell junction, tight junction . Cytoplasm . Cell projection, cilium membrane . Nucleus . Primarily localizes to the cell membrane (PubMed:23386276). Detected in the cilium of primary chondrocytes (By similarity). Highly expressed at areas of cell-cell contact and may localize to tight junctions (By similarity). Also found in the nucleus where it is detected in the soluble (as opposed to chromatin-bound) fraction (PubMed:23386276). .
<b>Tissue Specificity</b>	Detected in endothelial cells in mammary tissue, in both large vessels (left internal mammary artery) and small capillaries (vasa vasorum of the adventitia).
<b>Function</b>	function: May play a role in the maturation and maintenance of blood-brain barrier., similarity: Contains 2 Ig-like V-type (immunoglobulin-like) domains.,
<b>Background</b>	
<b>matters needing attention</b>	Avoid repeated freezing and thawing!

**Usage suggestions**

This product can be used in immunological reaction related experiments. For more information, please consult technical personnel.

**Products Images**

Western blot analysis of lysates from K562 cells, primary antibody was diluted at 1:1000, 4° over night



Immunohistochemical analysis of paraffin-embedded human liver cancer. 1, Antibody was diluted at 1:200(4° overnight). 2, Tris-EDTA, pH9.0 was used for antigen retrieval. 3, Secondary antibody was diluted at 1:200(room temperature, 45min).