



TPC1 rabbit pAb

Catalog No	YP-Ab-11914
Isotype	IgG
Reactivity	Human; Mouse; Rat
Applications	WB
Gene Name	TPCN1 KIAA1169 TPC1
Protein Name	TPC1
Immunogen	Synthesized peptide derived from human TPC1 AA range: 104-154
Specificity	This antibody detects endogenous levels of TPC1 at Human/Mouse/Rat
Formulation	Liquid in PBS containing 50% glycerol, 0.5% BSA and 0.02% sodium azide.
Source	Polyclonal, Rabbit, IgG
Purification	The antibody was affinity-purified from rabbit serum by affinity-chromatography using specific immunogen.
Dilution	WB 1: 500-2000
Concentration	1 mg/ml
Purity	≥90%
Storage Stability	-20°C/1 year
Synonyms	
Observed Band	
Cell Pathway	Lysosome membrane ; Multi-pass membrane protein . Endosome membrane ; Multi-pass membrane protein . Early endosome membrane ; Multi-pass membrane protein . Recycling endosome membrane ; Multi-pass membrane protein .
Tissue Specificity	Highest expression found in the heart and kidney, and lowest expression found in the spleen.
Function	domain: Each of the two internal repeats contains five hydrophobic transmembrane segments (S1, S2, S3, S5, S6) and one positively charged transmembrane segment (S4). S4 segments probably represent the voltage-sensor and are characterized by a series of positively charged amino acids at every third position. . function: May function as one of the major voltage-gated Ca(2+) channel (VDCC) across the plasma membrane. . similarity: Belongs to the calcium channel alpha-1 subunit (TC 1.A.1.11) family. . subunit: Dimer . tissue specificity: Highest expression found in the heart and kidney, and lowest expression found in the spleen. .
Background	Voltage-gated Ca(2+) and Na+ channels have 4 homologous domains, each containing 6 transmembrane segments, S1 to S6. TPCN1 is similar to these channels, but it has only 2 domains containing S1 to S6 [Ishibashi et al., 2000 [PubMed 10753632]]. [supplied by OMIM, Mar 2008],

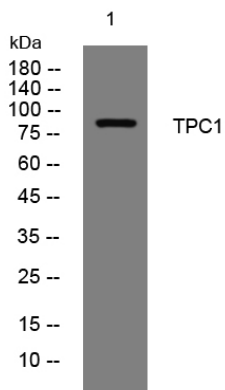
**matters needing attention**

Avoid repeated freezing and thawing!

Usage suggestions

This product can be used in immunological reaction related experiments. For more information, please consult technical personnel.

Products Images



Western blot analysis of lysates from HpeG2 cells, primary antibody was diluted at 1:1000, 4° over night