

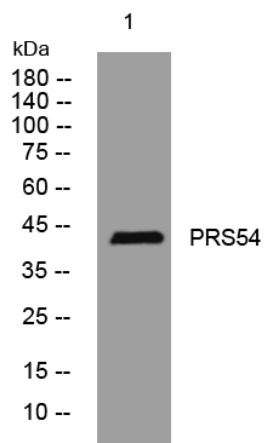


PRS54 rabbit pAb

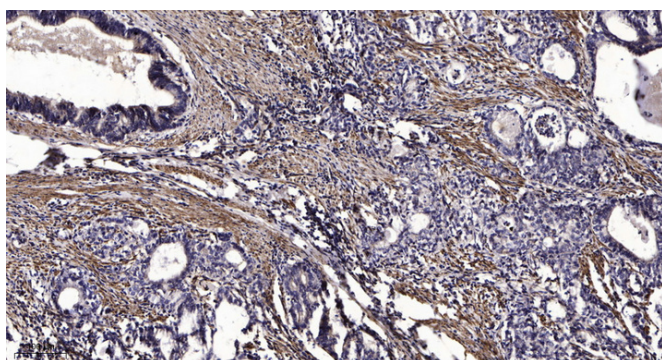
Catalog No	YP-Ab-11901
Isotype	IgG
Reactivity	Human; Mouse; Rat
Applications	WB; IHC
Gene Name	PRSS54 KLKBL4
Protein Name	PRS54
Immunogen	Synthesized peptide derived from human PRS54 AA range: 211-261
Specificity	This antibody detects endogenous levels of PRS54 at Human/Mouse/Rat
Formulation	Liquid in PBS containing 50% glycerol, 0.5% BSA and 0.02% sodium azide.
Source	Polyclonal, Rabbit, IgG
Purification	The antibody was affinity-purified from rabbit serum by affinity-chromatography using specific immunogen.
Dilution	WB 1:500-2000; IHC-p 1:50-300
Concentration	1 mg/ml
Purity	≥90%
Storage Stability	-20°C/1 year
Synonyms	
Observed Band	
Cell Pathway	Secreted .
Tissue Specificity	
Function	domain: The serine protease domain lacks the essential His, Asp, and Ser residues of the catalytic triad at positions 83, 129 and 221 and is predicted to be inactive., similarity: Belongs to the peptidase S1 family. Plasma kallikrein subfamily., similarity: Contains 1 peptidase S1 domain.,
Background	This gene encodes a putative serine-type endopeptidase containing the peptidase S1 domain. Alternative splicing of this gene results in multiple transcript variants. [provided by RefSeq, Feb 2015],
matters needing attention	Avoid repeated freezing and thawing!
Usage suggestions	This product can be used in immunological reaction related experiments. For more information, please consult technical personnel.



Products Images



Western blot analysis of lysates from HpeG2 cells, primary antibody was diluted at 1:1000, 4° over night



Immunohistochemical analysis of paraffin-embedded human Gastric adenocarcinoma. 1, Antibody was diluted at 1:200(4° overnight). 2, Tris-EDTA, pH9.0 was used for antigen retrieval. 3, Secondary antibody was diluted at 1:200(room temperature, 45min).