

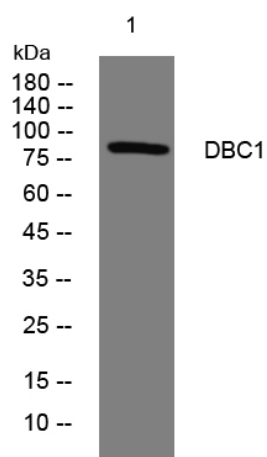


DBC1 rabbit pAb

Catalog No	YP-Ab-11889
Isotype	IgG
Reactivity	Human; Mouse; Rat
Applications	WB
Gene Name	DBC1 DBCCR1 FAM5A IB3089A
Protein Name	DBC1
Immunogen	Synthesized peptide derived from human DBC1 AA range: 100-150
Specificity	This antibody detects endogenous levels of DBC1 at Human/Mouse/Rat
Formulation	Liquid in PBS containing 50% glycerol, 0.5% BSA and 0.02% sodium azide.
Source	Polyclonal, Rabbit, IgG
Purification	The antibody was affinity-purified from rabbit serum by affinity-chromatography using specific immunogen.
Dilution	WB 1: 500-2000
Concentration	1 mg/ml
Purity	≥90%
Storage Stability	-20°C/1 year
Synonyms	
Observed Band	
Cell Pathway	Cytoplasm .
Tissue Specificity	Highly expressed in brain. Weakly expressed in heart, lung, skeletal muscle, kidney, thymus, prostate, testis and small intestine.
Function	function: Inhibits cell proliferation by negative regulation of the G1/S transition. Mediates cell death which is not of the classical apoptotic type and regulates expression of components of the plasminogen pathway., miscellaneous: DBC1 is silenced by methylation in 50% of bladder cancer cell lines., similarity: Belongs to the FAM5 family., similarity: Contains 1 MACPF domain., tissue specificity: Highly expressed in brain. Weakly expressed in heart, lung, skeletal muscle, kidney, thymus, prostate, testis and small intestine.,
Background	This gene is located within a chromosomal region that shows loss of heterozygosity in some bladder cancers. It contains a 5' CpG island that may be a frequent target of hypermethylation, and it may undergo hypermethylation-based silencing in some bladder cancers. [provided by RefSeq, Jul 2008],
matters needing attention	Avoid repeated freezing and thawing!

**Usage suggestions**

This product can be used in immunological reaction related experiments. For more information, please consult technical personnel.

Products Images

Western blot analysis of lysates from KB cells, primary antibody was diluted at 1:1000, 4° over night