



NLRC4 rabbit pAb

Catalog No	YP-Ab-11878
Isotype	IgG
Reactivity	Human; Mouse; Rat
Applications	WB
Gene Name	NLRC4 CARD12 CLAN CLAN1 IPAF UNQ6189/PRO20215
Protein Name	NLRC4
Immunogen	Synthesized peptide derived from human NLRC4 AA range: 481-531
Specificity	This antibody detects endogenous levels of NLRC4 at Human/Mouse/Rat
Formulation	Liquid in PBS containing 50% glycerol, 0.5% BSA and 0.02% sodium azide.
Source	Polyclonal, Rabbit, IgG
Purification	The antibody was affinity-purified from rabbit serum by affinity-chromatography using specific immunogen.
Dilution	WB 1: 500-2000
Concentration	1 mg/ml
Purity	≥90%
Storage Stability	-20°C/1 year
Synonyms	
Observed Band	
Cell Pathway	Cytoplasm . Cytoplasm, cytosol . Inflammasome .
Tissue Specificity	Isoform 2 is expressed ubiquitously, although highly expressed in lung and spleen. Isoform 1 is highly expressed in lung, followed by leukocytes especially monocytes, lymph node, colon, brain, prostate, placenta, spleen, bone marrow and fetal liver. Isoform 4 is only detected in brain.
Function	function: Plays a role in the promotion of apoptosis., similarity: Contains 1 CARD domain., similarity: Contains 1 NACHT domain., similarity: Contains 14 LRR (leucine-rich) repeats., subcellular location: Cytoplasmic filaments., subunit: Self-associates and binds to ASC, pro-caspase-1, NOD2, BCL10 and NALP1 (NAC) by CARD-CARD interaction., tissue specificity: Isoform 2 is expressed ubiquitously, although highly expressed in lung and spleen. Isoform 1 is highly expressed in lung, followed by leukocytes especially monocytes, lymph node, colon, brain, prostate, placenta, spleen, bone marrow and fetal liver. Isoform 4 is only detected in brain.,
Background	This gene encodes a member of the caspase recruitment domain-containing NLR family. Family members play essential roles in innate immune response to a wide range of pathogenic organisms, tissue damage and other cellular stresses. Mutations in this gene result in autoinflammation with infantile enterocolitis.



Alternative splicing results in multiple transcript variants. [provided by RefSeq, Oct 2014],

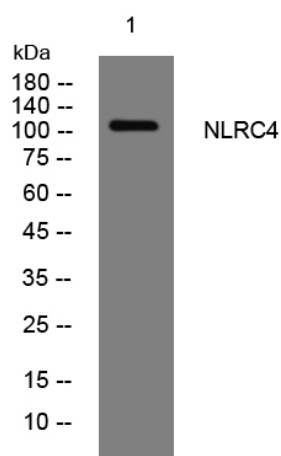
matters needing attention

Avoid repeated freezing and thawing!

Usage suggestions

This product can be used in immunological reaction related experiments. For more information, please consult technical personnel.

Products Images



Western blot analysis of lysates from KB cells, primary antibody was diluted at 1:1000, 4° over night