

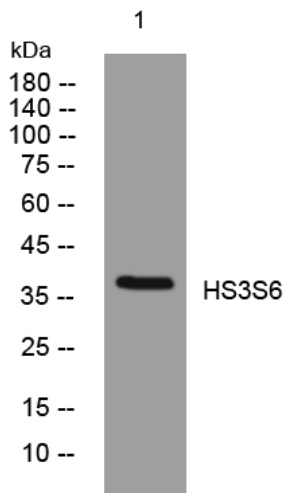


HS3S6 rabbit pAb

Catalog No	YP-Ab-11872
Isotype	IgG
Reactivity	Human; Mouse
Applications	WB
Gene Name	HS3ST6 HS3ST5
Protein Name	HS3S6
Immunogen	Synthesized peptide derived from human HS3S6 AA range: 142-192
Specificity	This antibody detects endogenous levels of HS3S6 at Human/Mouse
Formulation	Liquid in PBS containing 50% glycerol, 0.5% BSA and 0.02% sodium azide.
Source	Polyclonal, Rabbit,IgG
Purification	The antibody was affinity-purified from rabbit serum by affinity-chromatography using specific immunogen.
Dilution	WB 1: 500-2000
Concentration	1 mg/ml
Purity	≥90%
Storage Stability	-20°C/1 year
Synonyms	
Observed Band	
Cell Pathway	Golgi apparatus membrane ; Single-pass type II membrane protein .
Tissue Specificity	
Function	catalytic activity:3'-phosphoadenylyl sulfate + [heparan sulfate]-glucosamine = adenosine 3',5'-bisphosphate + [heparan sulfate]-glucosamine 3-sulfate.,function:Transfers a sulfuryl group to heparan sulfate. The substrate-specific O-sulfation generates an enzyme-modified heparan sulfate which acts as a binding receptor to Herpes Simplex Virus-1 (HSV-1) and permits its entry. Unlike 3-OST-1, does not convert non-anticoagulant heparan sulfate to anticoagulant heparan sulfate.,online information:GlycoGene database,similarity:Belongs to the sulfotransferase 1 family.,
Background	
matters needing attention	Avoid repeated freezing and thawing!

Usage suggestions

This product can be used in immunological reaction related experiments. For more information, please consult technical personnel.

Products Images

Western blot analysis of lysates from Jarkat cells,
primary antibody was diluted at 1:1000, 4° over night