

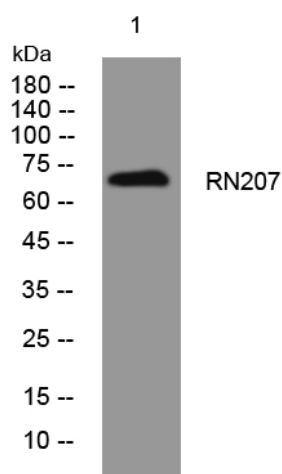


RN207 rabbit pAb

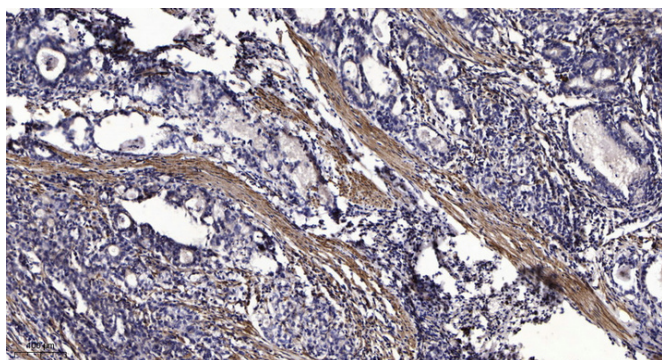
Catalog No	YP-Ab-11870
Isotype	IgG
Reactivity	Human; Mouse
Applications	WB;ELISA;IHC
Gene Name	RNF207 C1orf188
Protein Name	RN207
Immunogen	Synthesized peptide derived from human RN207 AA range: 407-457
Specificity	This antibody detects endogenous levels of RN207 at Human/Mouse
Formulation	Liquid in PBS containing 50% glycerol, 0.5% BSA and 0.02% sodium azide.
Source	Polyclonal, Rabbit,IgG
Purification	The antibody was affinity-purified from rabbit serum by affinity-chromatography using specific immunogen.
Dilution	WB 1:500-2000;IHC-p 1:50-300; ELISA 2000-20000
Concentration	1 mg/ml
Purity	≥90%
Storage Stability	-20°C/1 year
Synonyms	
Observed Band	
Cell Pathway	Cytoplasm . Probably located in the endoplasmic reticulum and/or possibly the cis-Golgi apparatus. .
Tissue Specificity	
Function	similarity:Contains 1 B box-type zinc finger.,similarity:Contains 1 RING-type zinc finger.,
Background	
matters needing attention	Avoid repeated freezing and thawing!
Usage suggestions	This product can be used in immunological reaction related experiments. For more information, please consult technical personnel.



Products Images



Western blot analysis of lysates from HpeG2 cells, primary antibody was diluted at 1:1000, 4° over night



Immunohistochemical analysis of paraffin-embedded human Gastric adenocarcinoma. 1, Antibody was diluted at 1:200(4° overnight). 2, Tris-EDTA, pH9.0 was used for antigen retrieval. 3, Secondary antibody was diluted at 1:200(room temperature, 45min).