



# RDH14 rabbit pAb

<b>Catalog No</b>	YP-Ab-11860
<b>Isotype</b>	IgG
<b>Reactivity</b>	Human; Mouse
<b>Applications</b>	WB;ELISA;IHC
<b>Gene Name</b>	RDH14 PAN2 UNQ529/PRO1072
<b>Protein Name</b>	RDH14
<b>Immunogen</b>	Synthesized peptide derived from human RDH14 AA range: 283-333
<b>Specificity</b>	This antibody detects endogenous levels of RDH14 at Human/Mouse
<b>Formulation</b>	Liquid in PBS containing 50% glycerol, 0.5% BSA and 0.02% sodium azide.
<b>Source</b>	Polyclonal, Rabbit,IgG
<b>Purification</b>	The antibody was affinity-purified from rabbit serum by affinity-chromatography using specific immunogen.
<b>Dilution</b>	WB 1:500-2000;IHC-p 1:50-300; ELISA 2000-20000
<b>Concentration</b>	1 mg/ml
<b>Purity</b>	≥90%
<b>Storage Stability</b>	-20°C/1 year
<b>Synonyms</b>	
<b>Observed Band</b>	
<b>Cell Pathway</b>	nucleus,mitochondrion,lysosomal membrane,endoplasmic reticulum,endoplasmic reticulum membrane,membrane,
<b>Tissue Specificity</b>	Widely expressed.
<b>Function</b>	catalytic activity:A 5'-ribonucleotide + H(2)O = a ribonucleoside + phosphate.,cofactor:Magnesium.,enzyme regulation:Activated by ADP.,function:Dephosphorylates the 5' and 2'(3')-phosphates of deoxyribonucleotides. Helps to regulate adenosine levels.,function:Exhibits an oxidoreductive catalytic activity towards retinoids. Most efficient as an NADPH-dependent retinal reductase. Displays high activity toward 9-cis and all-trans-retinol. No steroid dehydrogenase activity detected.,similarity:Belongs to the 5'-nucleotidase type 3 family.,similarity:Belongs to the short-chain dehydrogenases/reductases (SDR) family.,tissue specificity:Expressed in brain, kidney, pancreas and placenta.,tissue specificity:Highly expressed in testis, placenta and pancreas. Detected at lower levels in heart, kidney, liver and lung.,
<b>Background</b>	



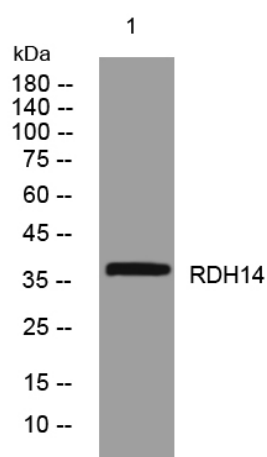
### matters needing attention

Avoid repeated freezing and thawing!

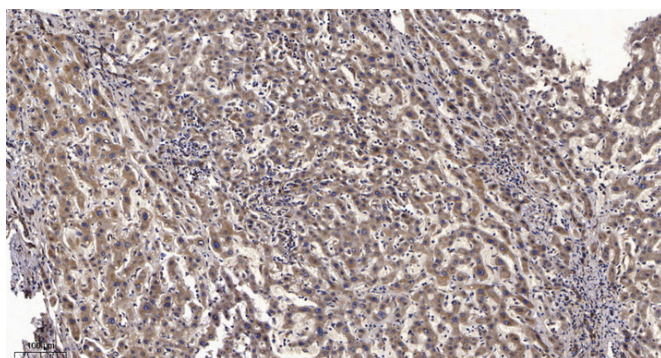
### Usage suggestions

This product can be used in immunological reaction related experiments. For more information, please consult technical personnel.

## Products Images



Western blot analysis of lysates from MDA-MB cells, primary antibody was diluted at 1:1000, 4° over night



Immunohistochemical analysis of paraffin-embedded human liver cancer. 1, Antibody was diluted at 1:200(4° overnight). 2, Tris-EDTA, pH9.0 was used for antigen retrieval. 3, Secondary antibody was diluted at 1:200(room temperature, 45min).