

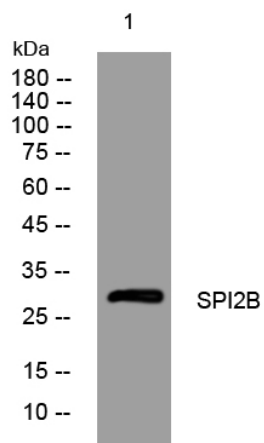


# SPI2B rabbit pAb

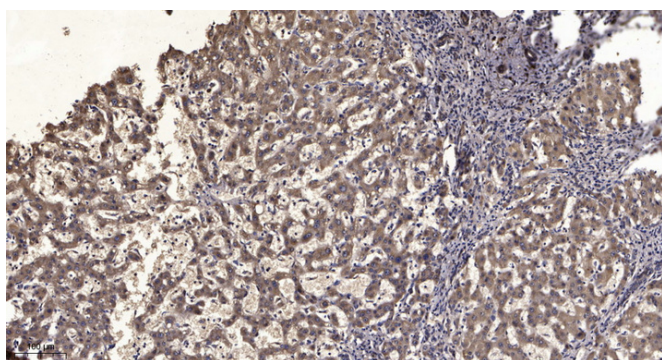
<b>Catalog No</b>	YP-Ab-11846
<b>Isotype</b>	IgG
<b>Reactivity</b>	Human;Rat;Mouse;
<b>Applications</b>	WB;ELISA;IHC
<b>Gene Name</b>	SPIN2B SPIN2
<b>Protein Name</b>	SPI2B
<b>Immunogen</b>	Synthesized peptide derived from human SPI2B AA range: 73-123
<b>Specificity</b>	This antibody detects endogenous levels of SPI2B at Human
<b>Formulation</b>	Liquid in PBS containing 50% glycerol, 0.5% BSA and 0.02% sodium azide.
<b>Source</b>	Polyclonal, Rabbit,IgG
<b>Purification</b>	The antibody was affinity-purified from rabbit serum by affinity-chromatography using specific immunogen.
<b>Dilution</b>	WB 1:500-2000;IHC-p 1:50-300; ELISA 2000-20000
<b>Concentration</b>	1 mg/ml
<b>Purity</b>	≥90%
<b>Storage Stability</b>	-20°C/1 year
<b>Synonyms</b>	
<b>Observed Band</b>	
<b>Cell Pathway</b>	Nucleus .
<b>Tissue Specificity</b>	Detected in all the examined tissues with highest expression in liver, followed by heart, stomach, kidney, skeletal muscle, placenta, and pancreas.
<b>Function</b>	function:Involved in the regulation of cell cycle progression, this activity is related to the inhibition of apoptosis following the removal of essential growth factors.,miscellaneous:Overexpression in murine myeloid cell line 32Dcl3 causes G2/M arrest.,similarity:Belongs to the SPIN/STSY family.,tissue specificity:Detected in all the examined tissues with highest expression in liver, followed by heart, stomach, kidney, skeletal muscle, placenta, and pancreas.,
<b>Background</b>	
<b>matters needing attention</b>	Avoid repeated freezing and thawing!
<b>Usage suggestions</b>	This product can be used in immunological reaction related experiments. For more information, please consult technical personnel.



## Products Images



Western blot analysis of lysates from Hela cells,  
primary antibody was diluted at 1:1000, 4° over night



Immunohistochemical analysis of paraffin-embedded  
human liver cancer. 1, Antibody was diluted at 1:200(4°  
overnight). 2, Tris-EDTA, pH9.0 was used for antigen  
retrieval. 3, Secondary antibody was diluted at  
1:200(room temperature, 45min).