

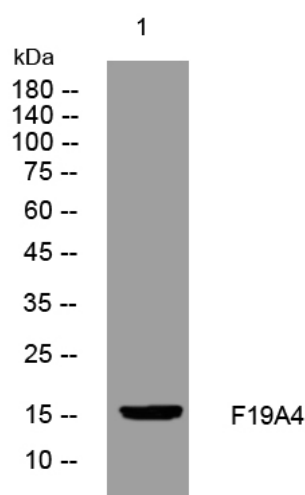


F19A4 rabbit pAb

Catalog No	YP-Ab-11843
Isotype	IgG
Reactivity	Human; Mouse
Applications	WB
Gene Name	FAM19A4 TAFA4
Protein Name	F19A4
Immunogen	Synthesized peptide derived from human F19A4 AA range: 40-90
Specificity	This antibody detects endogenous levels of F19A4 at Human/Mouse
Formulation	Liquid in PBS containing 50% glycerol, 0.5% BSA and 0.02% sodium azide.
Source	Polyclonal, Rabbit,IgG
Purification	The antibody was affinity-purified from rabbit serum by affinity-chromatography using specific immunogen.
Dilution	WB 1: 500-2000
Concentration	1 mg/ml
Purity	≥90%
Storage Stability	-20°C/1 year
Synonyms	
Observed Band	
Cell Pathway	Secreted .
Tissue Specificity	Expressed in brain (PubMed:15028294). Expressed in LPS-stimulated monocytes and macrophages, especially in polarized M1 (PubMed:25109685).
Function	caution:The sequence shown here is derived from an Ensembl automatic analysis pipeline and should be considered as preliminary data.,similarity:Belongs to the FAM19/TAFA family.,tissue specificity:Brain-specific.,
Background	This gene is a member of the TAFA family which is composed of five highly homologous genes that encode small secreted proteins. These proteins contain conserved cysteine residues at fixed positions, and are distantly related to MIP-1alpha, a member of the CC-chemokine family. The TAFA proteins are predominantly expressed in specific regions of the brain, and are postulated to function as brain-specific chemokines or neurokines, that act as regulators of immune and nervous cells. Alternatively spliced transcript variants have been observed for this gene. [provided by RefSeq, Nov 2011],
matters needing attention	Avoid repeated freezing and thawing!

**Usage suggestions**

This product can be used in immunological reaction related experiments. For more information, please consult technical personnel.

Products Images

Western blot analysis of lysates from CACO2 cells, primary antibody was diluted at 1:1000, 4° over night