

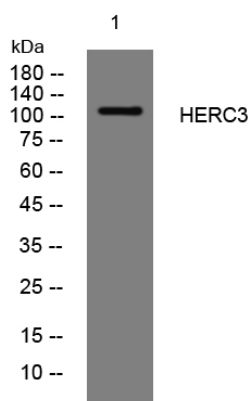


HERC3 rabbit pAb

Catalog No	YP-Ab-11836
Isotype	IgG
Reactivity	Human;Rat;Mouse;
Applications	WB
Gene Name	HERC3 KIAA0032
Protein Name	HERC3
Immunogen	Synthesized peptide derived from human HERC3 AA range: 985-1035
Specificity	This antibody detects endogenous levels of HERC3 at Human
Formulation	Liquid in PBS containing 50% glycerol, 0.5% BSA and 0.02% sodium azide.
Source	Polyclonal, Rabbit,IgG
Purification	The antibody was affinity-purified from rabbit serum by affinity-chromatography using specific immunogen.
Dilution	WB 1: 500-2000
Concentration	1 mg/ml
Purity	≥90%
Storage Stability	-20°C/1 year
Synonyms	
Observed Band	
Cell Pathway	Cytoplasm. Cytoplasmic vesicle. Also found in vesicular-like structures.
Tissue Specificity	
Function	function:E3 ubiquitin-protein ligase which accepts ubiquitin from an E2 ubiquitin-conjugating enzyme in the form of a thioester and then directly transfers the ubiquitin to targeted substrates.,pathway:Protein modification; protein ubiquitination.,PTM:Ubiquitinated; which promotes degradation by the proteasome.,similarity:Contains 1 HECT (E6AP-type E3 ubiquitin-protein ligase) domain.,similarity:Contains 7 RCC1 repeats.,subcellular location:Also found in vesicular-like structures.,
Background	This gene encodes a member the HERC ubiquitin ligase family. The encoded protein is located in the cytosol and binds ubiquitin via a HECT domain. Mutations in this gene have been associated with colorectal and gastric carcinomas. Alternatively spliced transcript variants encoding multiple isoforms have been observed for this gene. [provided by RefSeq, Oct 2012],
matters needing attention	Avoid repeated freezing and thawing!

Usage suggestions

This product can be used in immunological reaction related experiments. For more information, please consult technical personnel.

Products Images

Western blot analysis of lysates from 3T3 cells, primary antibody was diluted at 1:1000, 4° over night