



ROP1A rabbit pAb

Catalog No	YP-Ab-11818
Isotype	IgG
Reactivity	Human;Rat;Mouse;
Applications	WB;IHC
Gene Name	ROPN1 ROPN1A
Protein Name	ROP1A
Immunogen	Synthesized peptide derived from human ROP1A AA range: 85-135
Specificity	This antibody detects endogenous levels of ROP1A at Human
Formulation	Liquid in PBS containing 50% glycerol, 0.5% BSA and 0.02% sodium azide.
Source	Polyclonal, Rabbit,IgG
Purification	The antibody was affinity-purified from rabbit serum by affinity-chromatography using specific immunogen.
Dilution	WB 1:500-2000;IHC-p 1:50-300
Concentration	1 mg/ml
Purity	≥90%
Storage Stability	-20°C/1 year
Synonyms	
Observed Band	
Cell Pathway	Cell projection, cilium, flagellum . In the sperm tail, found in the principal piece and in the cytoplasmic droplet located at the distal end of the midpiece. Inner surface of the fibrous sheath. .
Tissue Specificity	Testis specific in adult. Overexpressed in hematologic tumor cells.
Function	developmental stage:Expressed in fetal liver.,domain:The RIIa domain mediates interaction with AKAP3.,miscellaneous:The name 'ropporin' comes from the Japanese word 'oppo' which means 'tail',similarity:Belongs to the ropporin family.,similarity:Contains 1 RIIa domain.,subcellular location:In the sperm tail, found in the principal piece and in the cytoplasmic droplet located at the distal end of the midpiece. Inner surface of the fibrous sheath.,subunit:Homodimer. Interacts with AKAP3 and RHPN1 (By similarity). May interact with SPA17.,tissue specificity:Testis specific in adult. Overexpressed in hematologic tumor cells.,
Background	The protein encoded by this gene is found in the fibrous sheath of spermatazoa, where it interacts with rhophilin, a Rho GTPase binding protein. The encoded protein also can bind an A-kinase anchoring protein (AKAP110) and a calcium-binding tyrosine phosphorylation-regulated protein (CABYR). This protein may be involved in sperm motility and has been shown to be a cancer-testis antigen in hematologic malignancies. Several transcript variants, some



protein-coding and some non-protein coding, have been found for this gene.
[provided by RefSeq, Dec 2015],

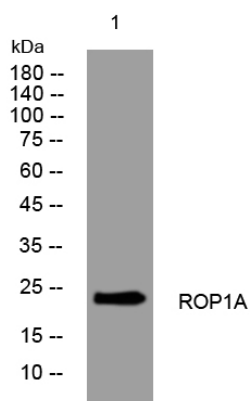
matters needing attention

Avoid repeated freezing and thawing!

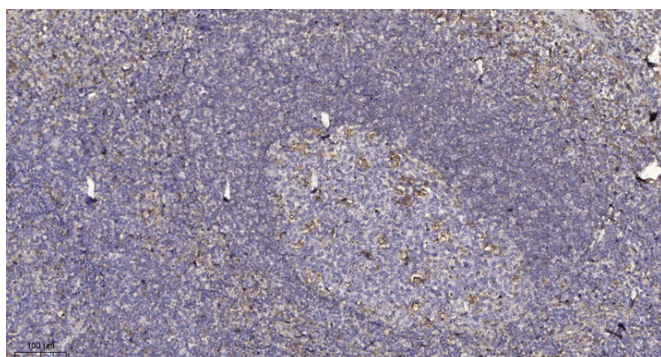
Usage suggestions

This product can be used in immunological reaction related experiments. For more information, please consult technical personnel.

Products Images



Western blot analysis of lysates from Hela cells, primary antibody was diluted at 1:1000, 4° over night



Immunohistochemical analysis of paraffin-embedded human tonsil. 1, Antibody was diluted at 1:200 (4° overnight). 2, Tris-EDTA, pH 9.0 was used for antigen retrieval. 3, Secondary antibody was diluted at 1:200 (room temperature, 45 min).